

Product datasheet for **TA346085**

EGF Rabbit Polyclonal Antibody

Product data:

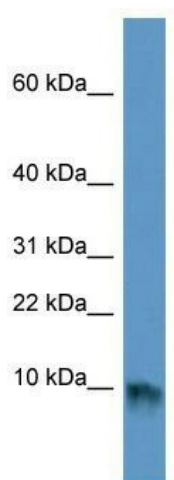
Product Type:	Primary Antibodies
Applications:	WB
Recommended Dilution:	WB
Reactivity:	Human
Host:	Rabbit
Isotype:	IgG
Clonality:	Polyclonal
Immunogen:	The immunogen for anti-EGF antibody: synthetic peptide directed towards the middle region of human EGF. Synthetic peptide located within the following region: ITIDFLTDKLYWCDKQSVIEMANLDGSKRRRLTQNDVGHPFAVAVFEDY
Formulation:	Liquid. Purified antibody supplied in 1x PBS buffer with 0.09% (w/v) sodium azide and 2% sucrose. <i>Note that this product is shipped as lyophilized powder to China customers.</i>
Purification:	Affinity Purified
Conjugation:	Unconjugated
Storage:	Store at -20°C as received.
Stability:	Stable for 12 months from date of receipt.
Predicted Protein Size:	6 kDa
Gene Name:	epidermal growth factor
Database Link:	NP_001954 Entrez Gene 1950 Human P01133
Background:	Epidermal growth factor has a profound effect on the differentiation of specific cells in vivo and is a potent mitogenic factor for a variety of cultured cells of both ectodermal and mesodermal origin.
Synonyms:	HOMG4; URG
Note:	Immunogen Sequence Homology: Human: 100%; Pig: 93%; Horse: 93%; Rabbit: 93%; Dog: 86%; Rat: 86%; Mouse: 79%



[View online »](#)

Protein Families:	Adult stem cells, Druggable Genome, Embryonic stem cells, ES Cell Differentiation/IPS, Induced pluripotent stem cells, Transmembrane
Protein Pathways:	Bladder cancer, Cytokine-cytokine receptor interaction, Endocytosis, Endometrial cancer, ErbB signaling pathway, Focal adhesion, Gap junction, Glioma, MAPK signaling pathway, Melanoma, Non-small cell lung cancer, Pancreatic cancer, Pathways in cancer, Prostate cancer, Regulation of actin cytoskeleton

Product images:



WB Suggested Anti-EGF Antibody Titration: 0.2-1 ug/ml; ELISA Titer: 1: 1562500; Positive Control: COLO205 cell lysate