

## Product datasheet for **TA346084**

### Desmin (DES) Rabbit Polyclonal Antibody

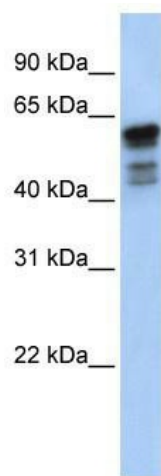
#### Product data:

Product Type:	Primary Antibodies
Applications:	WB
Recommended Dilution:	WB
Reactivity:	Human, Mouse
Host:	Rabbit
Isotype:	IgG
Clonality:	Polyclonal
Immunogen:	The immunogen for anti-DES antibody: synthetic peptide directed towards the middle region of human DES. Synthetic peptide located within the following region: MALDVEIATYRKLLLEGESRINLP IQTYSALNFRETSPEQRGSEVHTKKT
Formulation:	Liquid. Purified antibody supplied in 1x PBS buffer with 0.09% (w/v) sodium azide and 2% sucrose. <i>Note that this product is shipped as lyophilized powder to China customers.</i>
Purification:	Affinity Purified
Conjugation:	Unconjugated
Storage:	Store at -20°C as received.
Stability:	Stable for 12 months from date of receipt.
Predicted Protein Size:	53 kDa
Gene Name:	desmin
Database Link:	<a href="#">NP_001918</a> <a href="#">Entrez Gene 13346 Mouse</a> <a href="#">Entrez Gene 1674 Human</a> <a href="#">P17661</a>



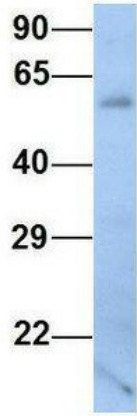
[View online »](#)

<b>Background:</b>	DES is a muscle-specific class III intermediate filament. Homopolymers of this protein form a stable intracytoplasmic filamentous network connecting myofibrils to each other and to the plasma membrane. Mutations in its gene are associated with desmin-related myopathy, a familial cardiac and skeletal myopathy (CSM), and with distal myopathies. This gene encodes a muscle-specific class III intermediate filament. Homopolymers of this protein form a stable intracytoplasmic filamentous network connecting myofibrils to each other and to the plasma membrane. Mutations in this gene are associated with desmin-related myopathy, a familial cardiac and skeletal myopathy (CSM), and with distal myopathies. Publication Note: This RefSeq record includes a subset of the publications that are available for this gene. Please see the Entrez Gene record to access additional publications.
<b>Synonyms:</b>	CSM1; CSM2; LGMD2R
<b>Note:</b>	Immunogen Sequence Homology: Dog: 100%; Pig: 100%; Rat: 100%; Horse: 100%; Human: 100%; Mouse: 100%; Bovine: 100%; Rabbit: 100%; Guinea pig: 100%
<b>Protein Families:</b>	Druggable Genome
<b>Protein Pathways:</b>	Arrhythmogenic right ventricular cardiomyopathy (ARVC), Dilated cardiomyopathy, Hypertrophic cardiomyopathy (HCM)

**Product images:**

WB Suggested Anti-DES Antibody Titration: 0.2-1 ug/ml; ELISA Titer: 1: 1562500; Positive Control: Human Muscle

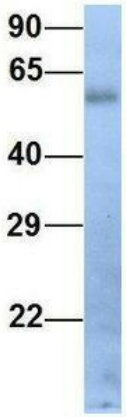
### DES



Rabbit Anti-DES  
Sample Type: Human Fetal Heart  
Antibody Concentration: 1ug/mL

Host: Rabbit; Target Name: DES; Sample Tissue: Human Fetal Heart; Antibody Dilution: 1.0 ug/ml

### DES



Rabbit Anti-DES  
Sample Type: Human Fetal Lung  
Antibody Concentration: 1ug/mL

Host: Rabbit; Target Name: DES; Sample Tissue: Human Fetal Lung; Antibody Dilution: 1.0 ug/ml