

## Product datasheet for **TA346077**

### BHMT Rabbit Polyclonal Antibody

#### Product data:

Product Type:	Primary Antibodies
Applications:	IHC, WB
Recommended Dilution:	WB, IHC
Reactivity:	Human, Rat
Host:	Rabbit
Isotype:	IgG
Clonality:	Polyclonal
Immunogen:	The immunogen for anti-BHMT antibody: synthetic peptide directed towards the N terminal of human BHMT. Synthetic peptide located within the following region: AVEHPEAVRQLHREFLRAGSNVMQTFTFYASEDKLENRGNVYVLEKISGQE
Formulation:	Liquid. Purified antibody supplied in 1x PBS buffer with 0.09% (w/v) sodium azide and 2% sucrose. <i>Note that this product is shipped as lyophilized powder to China customers.</i>
Purification:	Affinity Purified
Conjugation:	Unconjugated
Storage:	Store at -20°C as received.
Stability:	Stable for 12 months from date of receipt.
Predicted Protein Size:	45 kDa
Gene Name:	betaine--homocysteine S-methyltransferase
Database Link:	<a href="#">NP_001704</a> <a href="#">Entrez Gene 81508 Rat</a> <a href="#">Entrez Gene 635 Human</a> <a href="#">Q93088</a>
Background:	BHMT is a cytosolic enzyme that catalyzes the conversion of betaine and homocysteine to dimethylglycine and methionine, respectively. Defects in its gene could lead to hyperhomocyst(e)inemia, but such a defect has not yet been observed. Betaine-homocysteine methyltransferase is a cytosolic enzyme that catalyzes the conversion of betaine and homocysteine to dimethylglycine and methionine, respectively. Defects in BHMT could lead to hyperhomocyst(e)inemia, but such a defect has not yet been observed.



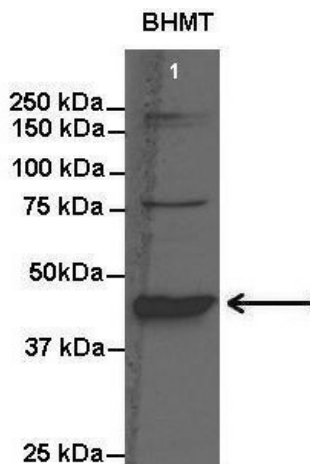
[View online »](#)

**Synonyms:** BHMT1; HEL-S-61p

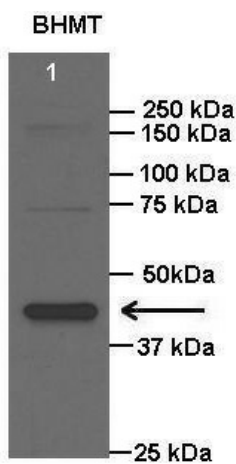
**Note:** Immunogen Sequence Homology: Dog: 100%; Pig: 100%; Rat: 100%; Horse: 100%; Human: 100%; Mouse: 100%; Bovine: 100%; Rabbit: 100%; Guinea pig: 100%; Zebrafish: 93%

**Protein Pathways:** Cysteine and methionine metabolism, Glycine, serine and threonine metabolism, Metabolic pathways

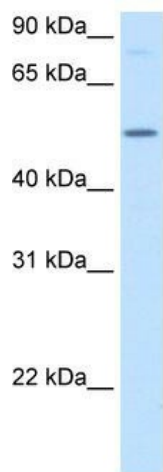
**Product images:**



Lanes: Lane 1: 20 ug rat liver lysate; Primary Antibody Dilution: 1: 1000; Secondary Antibody: Anti-rabbit HRP; Secondary Antibody Dilution: 1: 15000; Gene Name: BHMT; Submitted by: Anonymous;



Lanes: Lane 1: 20 ug rat liver lysate; Primary Antibody Dilution: 1: 2000; Secondary Antibody: Anti-rabbit HRP; Secondary Antibody Dilution: 1: 15000; Gene Name: BHMT; Submitted by: Anonymous;

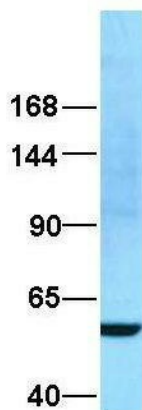


Rabbit Anti-BHMT Antibody  
 Catalog Number: ARP41474  
 Lot Number: QC12279  
 Lane: Fetal Liver Cell Lysate

Antibody Titration: 2.5µg/ml  
 Gel Concentration: 12%

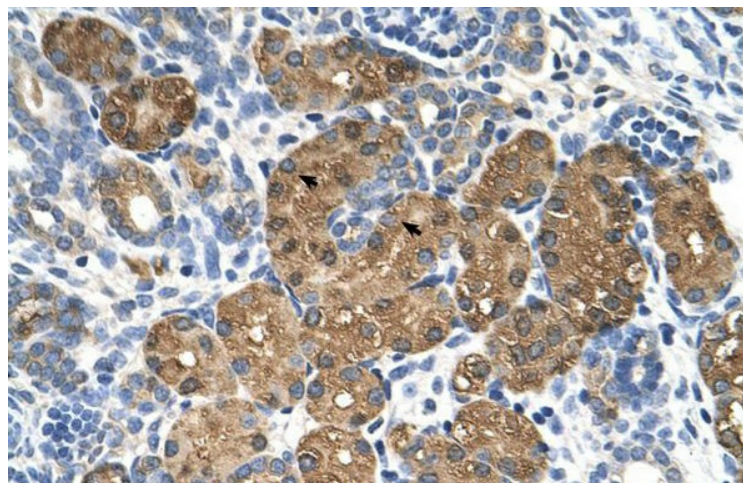
WB Suggested Anti-BHMT Antibody; Titration: 2.5 ug/ml; Positive Control: Human Fetal Liver cell lysate

**BHMT**



Rabbit Anti-BHMT  
 Sample Type: Human 293T  
 Antibody Concentration: 1ug/mL

Host: Rabbit; Target Name: BHMT; Sample Tissue: 293T; Antibody Dilution: 1.0 ug/ml



Rabbit Anti-BHMT Antibody; Paraffin Embedded Tissue: Human Kidney; Cellular Data: Epithelial cells of renal tubule; Antibody Concentration: 4.0-8.0 ug/ml; Magnification: 400X