

## Product datasheet for **TA346075**

### EMP2 Rabbit Polyclonal Antibody

#### Product data:

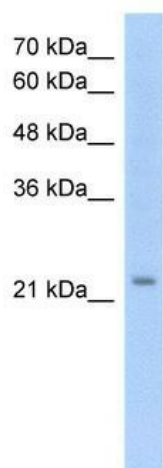
Product Type:	Primary Antibodies
Applications:	IHC, WB
Recommended Dilution:	WB, IHC
Reactivity:	Human
Host:	Rabbit
Isotype:	IgG
Clonality:	Polyclonal
Immunogen:	The immunogen for anti-EMP2 antibody: synthetic peptide directed towards the middle region of human EMP2. Synthetic peptide located within the following region: IQLMSCLCVMIAASIYTDRRREDIHDKNAKFYPVTRREGSYGYSYLAWVAF
Formulation:	Liquid. Purified antibody supplied in 1x PBS buffer with 0.09% (w/v) sodium azide and 2% sucrose. <i>Note that this product is shipped as lyophilized powder to China customers.</i>
Purification:	Affinity Purified
Conjugation:	Unconjugated
Storage:	Store at -20°C as received.
Stability:	Stable for 12 months from date of receipt.
Predicted Protein Size:	18 kDa
Gene Name:	epithelial membrane protein 2
Database Link:	<a href="#">NP_001415</a> <a href="#">Entrez Gene 2013 Human P54851</a>
Background:	Epithelial membrane protein-2 (EMP2) is a member of the four transmembrane superfamily (TM4SF) and is thought to mediate trafficking of diverse proteins such as alpha6beta1 integrin and MHC class I to lipid raft microdomains. EMP2 has also recently been recognized as a putative tumor suppressor gene in certain model systems.
Synonyms:	XMP
Note:	Immunogen Sequence Homology: Human: 100%; Bovine: 82%



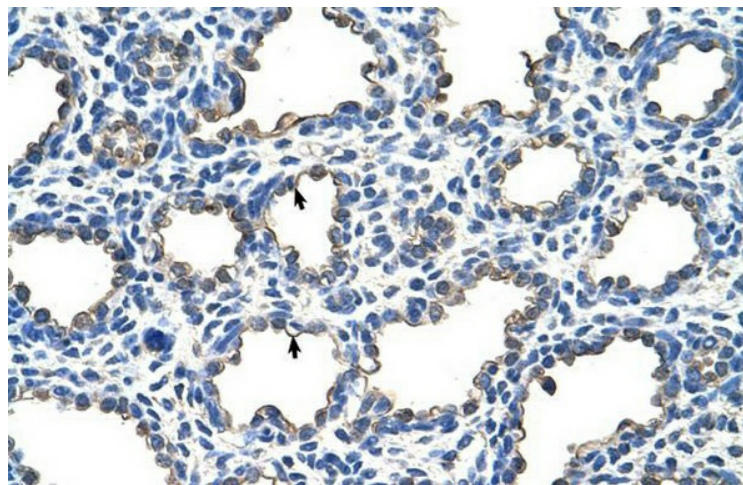
[View online »](#)

Protein Families: Transmembrane

### Product images:



WB Suggested Anti-EMP2 Antibody Titration: 1.25 ug/ml; Positive Control: HepG2 cell lysate



Rabbit Anti-EMP2 Antibody; Paraffin Embedded Tissue: Human Lung; Cellular Data: Alveolar cells; Antibody Concentration: 4.0-8.0 ug/ml; Magnification: 400X