

Product datasheet for **TA346067**

HEY1 Rabbit Polyclonal Antibody

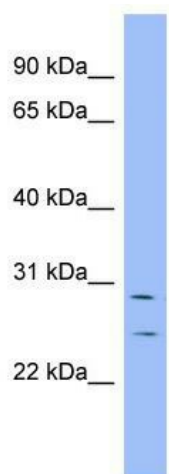
Product data:

Product Type:	Primary Antibodies
Applications:	WB
Recommended Dilution:	WB
Reactivity:	Human
Host:	Rabbit
Isotype:	IgG
Clonality:	Polyclonal
Immunogen:	The immunogen for anti-HEY1 antibody: synthetic peptide directed towards the N terminal of human HEY1. Synthetic peptide located within the following region: ALGSMSPPTSSQILARKRRRGIIKRRRDRINNSLSELRRRLVPSAFEKQG
Formulation:	Liquid. Purified antibody supplied in 1x PBS buffer with 0.09% (w/v) sodium azide and 2% sucrose. <i>Note that this product is shipped as lyophilized powder to China customers.</i>
Purification:	Affinity Purified
Conjugation:	Unconjugated
Storage:	Store at -20°C as received.
Stability:	Stable for 12 months from date of receipt.
Predicted Protein Size:	32 kDa
Gene Name:	hes related family bHLH transcription factor with YRPW motif 1
Database Link:	NP_036390 Entrez Gene 23462 Human Q9Y5J3
Background:	This gene encodes a nuclear protein belonging to the hairy and enhancer of split-related (HESR) family of basic helix-loop-helix (bHLH)-type transcriptional repressors.
Synonyms:	BHLHb31; CHF2; HERP2; HESR1; hHRT1; HRT-1; OAF1
Note:	Immunogen Sequence Homology: Dog: 100%; Pig: 100%; Rat: 100%; Horse: 100%; Human: 100%; Mouse: 100%; Bovine: 100%; Rabbit: 100%; Zebrafish: 100%; Guinea pig: 100%; Sheep: 93%



[View online »](#)

Protein Families: Druggable Genome, Transcription Factors

Product images:

WB Suggested Anti-HEY1 Antibody Titration: 0.2-1 ug/ml; ELISA Titer: 1: 312500; Positive Control: ACHN cell lysate