

Product datasheet for **TA346065**

PRPS2 Rabbit Polyclonal Antibody

Product data:

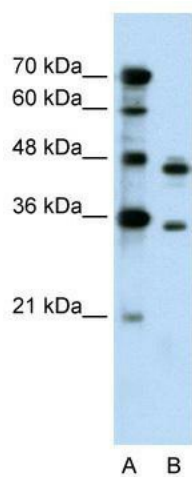
Product Type:	Primary Antibodies
Applications:	IHC, WB
Recommended Dilution:	WB, IHC
Reactivity:	Human
Host:	Rabbit
Isotype:	IgG
Clonality:	Polyclonal
Immunogen:	The immunogen for anti-PRPS2 antibody: synthetic peptide directed towards the middle region of human PRPS2. Synthetic peptide located within the following region: VSPDAGGAKRVTSIADRLNVEFALIHKERKKANEVDRMVLVGDVKDRVAI
Formulation:	Liquid. Purified antibody supplied in 1x PBS buffer with 0.09% (w/v) sodium azide and 2% sucrose. <i>Note that this product is shipped as lyophilized powder to China customers.</i>
Purification:	Affinity Purified
Conjugation:	Unconjugated
Storage:	Store at -20°C as received.
Stability:	Stable for 12 months from date of receipt.
Predicted Protein Size:	35 kDa
Gene Name:	phosphoribosyl pyrophosphate synthetase 2
Database Link:	NP_002756 Entrez Gene 5634 Human P11908
Background:	The function remains unknown.
Synonyms:	PRSII
Note:	Immunogen Sequence Homology: Dog: 100%; Pig: 100%; Rat: 100%; Horse: 100%; Human: 100%; Mouse: 100%; Bovine: 100%; Rabbit: 100%; Zebrafish: 100%; Guinea pig: 100%
Protein Families:	Druggable Genome



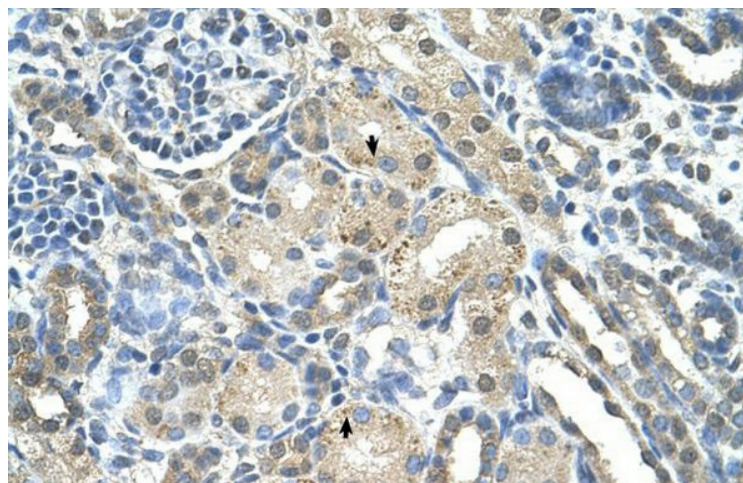
[View online »](#)

Protein Pathways: Metabolic pathways, Pentose phosphate pathway, Purine metabolism

Product images:



WB Suggested Anti-PRPS2 Antibody Titration: 0.2-1 ug/ml; Positive Control: HepG2 cell lysate



Rabbit Anti-PRPS2 Antibody; Paraffin Embedded Tissue: Human Kidney; Cellular Data: Epithelial cells of renal tubule; Antibody Concentration: 4.0-8.0 ug/ml; Magnification: 400X