

Product datasheet for **TA346055**

Claudin18 (CLDN18) Rabbit Polyclonal Antibody

Product data:

Product Type:	Primary Antibodies
Applications:	WB
Recommended Dilution:	WB
Reactivity:	Human
Host:	Rabbit
Isotype:	IgG
Clonality:	Polyclonal
Immunogen:	The immunogen for anti-CLDN18 antibody: synthetic peptide directed towards the middle region of human CLDN18. Synthetic peptide located within the following region: LVTNFWMSTANMYTGMGGMVQTVQTRYTFGAALFVGWVAGGLTLIGGVM
Formulation:	Liquid. Purified antibody supplied in 1x PBS buffer with 0.09% (w/v) sodium azide and 2% sucrose. <i>Note that this product is shipped as lyophilized powder to China customers.</i>
Purification:	Affinity Purified
Conjugation:	Unconjugated
Storage:	Store at -20°C as received.
Stability:	Stable for 12 months from date of receipt.
Predicted Protein Size:	28 kDa
Gene Name:	claudin 18
Database Link:	NP_001002026 Entrez Gene 51208 Human P56856
Background:	CLDN18 belongs to the large claudin family of proteins, which form tight junction strands in epithelial cells.
Synonyms:	SFTA5; SFTPJ
Note:	Immunogen Sequence Homology: Pig: 100%; Rat: 100%; Human: 100%; Mouse: 100%; Bovine: 100%; Rabbit: 100%; Dog: 93%; Horse: 93%; Guinea pig: 93%

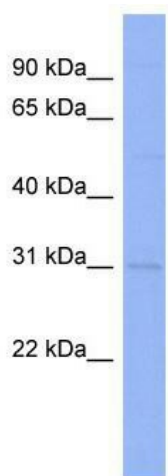


[View online »](#)

Protein Families: Transmembrane

Protein Pathways: Cell adhesion molecules (CAMs), Leukocyte transendothelial migration, Tight junction

Product images:



WB Suggested Anti-CLDN18 Antibody Titration:
0.2-1 ug/ml; ELISA Titer: 1: 12500; Positive
Control: THP-1 cell lysate