

Product datasheet for **TA346053**

PLA2G5 Rabbit Polyclonal Antibody

Product data:

Product Type:	Primary Antibodies
Applications:	WB
Recommended Dilution:	WB
Reactivity:	Human
Host:	Rabbit
Isotype:	IgG
Clonality:	Polyclonal
Immunogen:	The immunogen for anti-PLA2G5 antibody: synthetic peptide directed towards the N terminal of human PLA2G5. Synthetic peptide located within the following region: MKGLLPLAWFLACSVPAVQGGLLDLKSMIEKVTGKNALTNYGFGCYCGW
Formulation:	Liquid. Purified antibody supplied in 1x PBS buffer with 0.09% (w/v) sodium azide and 2% sucrose. <i>Note that this product is shipped as lyophilized powder to China customers.</i>
Purification:	Affinity Purified
Conjugation:	Unconjugated
Storage:	Store at -20°C as received.
Stability:	Stable for 12 months from date of receipt.
Predicted Protein Size:	14 kDa
Gene Name:	phospholipase A2 group V
Database Link:	NP_000920 Entrez Gene 5322 Human P39877
Background:	This gene is a member of the secretory phospholipase A2 family. It is located in a tightly-linked cluster of secretory phospholipase A2 genes on chromosome 1. The encoded enzyme catalyzes the hydrolysis of membrane phospholipids to generate lysophospholip and free fatty acids including arachidonic acid.
Synonyms:	FRFB; GV-PLA2; hVPLA(2); PLA2-10



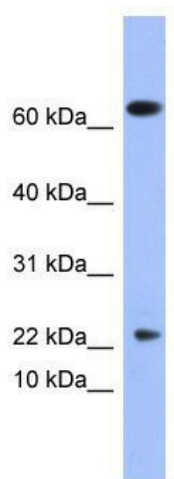
[View online »](#)

Note: Immunogen Sequence Homology: Human: 100%; Rat: 86%; Mouse: 86%; Bovine: 86%; Dog: 85%; Rabbit: 85%; Horse: 79%

Protein Families: Druggable Genome, Secreted Protein

Protein Pathways: alpha-Linolenic acid metabolism, Arachidonic acid metabolism, Ether lipid metabolism, Fc epsilon RI signaling pathway, Glycerophospholipid metabolism, GnRH signaling pathway, Linoleic acid metabolism, Long-term depression, MAPK signaling pathway, Metabolic pathways, Vascular smooth muscle contraction, VEGF signaling pathway

Product images:



WB Suggested Anti-PLA2G5 Antibody Titration:
0.2-1 ug/ml; ELISA Titer: 1: 312500; Positive
Control: Human Thymus