

## Product datasheet for **TA346052**

### Folate Binding Protein (FOLR1) Rabbit Polyclonal Antibody

#### Product data:

Product Type:	Primary Antibodies
Applications:	IHC, WB
Recommended Dilution:	WB
Reactivity:	Human
Host:	Rabbit
Isotype:	IgG
Clonality:	Polyclonal
Immunogen:	The immunogen for anti-FOLR1 antibody: synthetic peptide directed towards the middle region of human FOLR1. Synthetic peptide located within the following region: HFYFPTPTVLCNEIWTHSYKVSNSYRSGRGIQMWFDPAQGNPNEEVARF
Formulation:	Liquid. Purified antibody supplied in 1x PBS buffer with 0.09% (w/v) sodium azide and 2% sucrose. <i>Note that this product is shipped as lyophilized powder to China customers.</i>
Purification:	Affinity Purified
Conjugation:	Unconjugated
Storage:	Store at -20°C as received.
Stability:	Stable for 12 months from date of receipt.
Predicted Protein Size:	29 kDa
Gene Name:	folate receptor 1 (adult)
Database Link:	<a href="#">NP_000793</a> <a href="#">Entrez Gene 2348 Human P15328</a>
Background:	The protein encoded by this gene is a member of the folate receptor family. Members of this gene family bind folic acid and its reduced derivatives, and transport 5-methyltetrahydrofolate into cells. This gene product is a secreted protein that either anchors to membranes via a glycosyl-phosphatidylinositol linkage or exists in a soluble form.
Synonyms:	FBP; FOLR

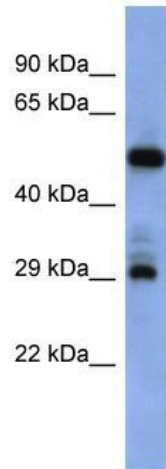


[View online »](#)

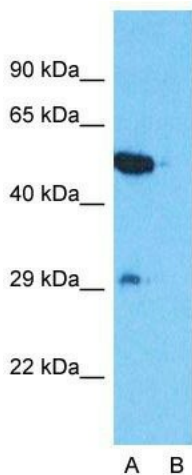
**Note:** Immunogen Sequence Homology: Dog: 100%; Rat: 100%; Horse: 100%; Human: 100%; Mouse: 100%; Rabbit: 100%; Pig: 93%; Bovine: 93%; Guinea pig: 93%

**Protein Families:** Druggable Genome, Secreted Protein, Transmembrane

**Product images:**



WB Suggested Anti-FOLR1 Antibody Titration: 0.2-1 ug/ml; ELISA Titer: 1: 62500; Positive Control: PANC1 cell lysate FOLR1 is supported by BioGPS gene expression data to be expressed in PANC1



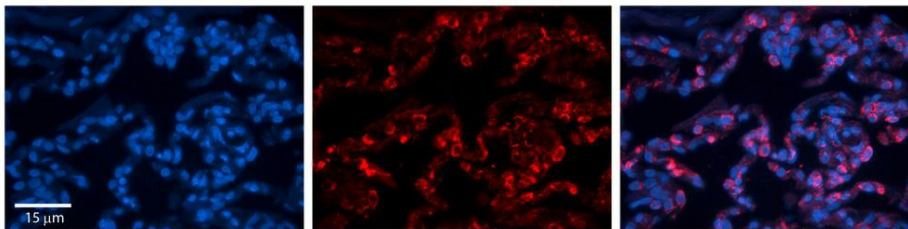
**Anti-FOLR1 Western Blot & Peptide Block Validation**

Lysate: PANC1 Cell

Lane A: Primary Antibody  
Lane B: Primary Antibody + Blocking Peptide

Primary Antibody Concentration: 1.0 µg/ml  
Peptide Concentration: 5.0 µg/ml  
Lysate Quantity: 25 µg/lane  
Gel Concentration: 12%

Host: Rabbit; Target Name: FOLR1; Sample Tissue: PANC1 Whole Cell; Lane A: Primary Antibody; Lane B: Primary Antibody + Blocking Peptide; Primary Antibody Concentration: 1 ug/ml; Peptide Concentration: 5 ug/ml; Lysate Quantity: 25 ug/lane/Lane; Gel Concentration: 0.12



Rabbit Anti-FOLR1 Antibody; Formalin Fixed Paraffin Embedded Tissue: Human Lung Tissue; Observed Staining: Membrane and cytoplasmic in alveolar type I & II cells; Primary Antibody Concentration: 1: 100; Other Working Concentrations: 1/600; Secondary Antibody: Donkey anti-Rabbit-Cy3; Secondary Antibody Concentration: 1: 200; Magnification: 20X; Exposure Time: 0.5–2.0 sec;