

## Product datasheet for **TA346051**

### DOPA Decarboxylase (DDC) Rabbit Polyclonal Antibody

#### Product data:

Product Type:	Primary Antibodies
Applications:	WB
Recommended Dilution:	WB
Reactivity:	Human
Host:	Rabbit
Isotype:	IgG
Clonality:	Polyclonal
Immunogen:	The immunogen for anti-DDC antibody: synthetic peptide directed towards the middle region of human DDC. Synthetic peptide located within the following region: SLKMWFVFRMYGVKGLQAYIRKHVQLSHEFESLVRQDPRFEICVEVILGL
Formulation:	Liquid. Purified antibody supplied in 1x PBS buffer with 0.09% (w/v) sodium azide and 2% sucrose. <i>Note that this product is shipped as lyophilized powder to China customers.</i>
Purification:	Affinity Purified
Conjugation:	Unconjugated
Storage:	Store at -20°C as received.
Stability:	Stable for 12 months from date of receipt.
Predicted Protein Size:	54 kDa
Gene Name:	dopa decarboxylase
Database Link:	<a href="#">NP_000781</a> <a href="#">Entrez Gene 1644 Human</a> <a href="#">P20711</a>
Background:	DDC catalyzes the decarboxylation of L-3,4-dihydroxyphenylalanine (DOPA) to dopamine, L-5-hydroxytryptophan to serotonin and L-tryptophan to tryptamine.
Synonyms:	AADC
Note:	Immunogen Sequence Homology: Pig: 100%; Rat: 100%; Human: 100%; Mouse: 100%; Guinea pig: 100%; Horse: 93%; Rabbit: 93%; Dog: 86%; Bovine: 79%

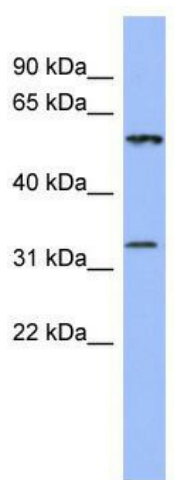


[View online »](#)

Protein Families: Druggable Genome

Protein Pathways: Histidine metabolism, Metabolic pathways, Phenylalanine metabolism, Tryptophan metabolism, Tyrosine metabolism

### Product images:



WB Suggested Anti-DDC Antibody Titration: 0.2-1 ug/ml; ELISA Titer: 1: 312500; Positive Control: Human Spleen