

## Product datasheet for **TA346046**

### C4BPA Rabbit Polyclonal Antibody

#### Product data:

Product Type:	Primary Antibodies
Applications:	WB
Recommended Dilution:	WB
Reactivity:	Human
Host:	Rabbit
Isotype:	IgG
Clonality:	Polyclonal
Immunogen:	The immunogen for anti-C4BPA antibody: synthetic peptide directed towards the middle region of human C4BPA. Synthetic peptide located within the following region: QVLTGKRLMQCLPNPEDVKMALEVYKLSLEIEQLELQRDSARQSTLDKEL
Formulation:	Liquid. Purified antibody supplied in 1x PBS buffer with 0.09% (w/v) sodium azide and 2% sucrose. <i>Note that this product is shipped as lyophilized powder to China customers.</i>
Purification:	Affinity Purified
Conjugation:	Unconjugated
Storage:	Store at -20°C as received.
Stability:	Stable for 12 months from date of receipt.
Predicted Protein Size:	62 kDa
Gene Name:	complement component 4 binding protein alpha
Database Link:	<a href="#">NP_000706</a> <a href="#">Entrez Gene 722 Human</a> <a href="#">P04003</a>



[View online »](#)

**Background:**

C4BPA is a member of a superfamily of proteins composed predominantly of tandemly arrayed short consensus repeats of approximately 60 amino acids. Along with a single, unique beta-chain, seven identical alpha-chains encoded by this gene assemble into the predominant isoform of C4b-binding protein, a multimeric protein that controls activation of the complement cascade through the classical pathway. The genes encoding both alpha and beta chains are located adjacent to each other on human chromosome 1 in the regulator of complement activation gene cluster. This gene encodes a member of a superfamily of proteins composed predominantly of tandemly arrayed short consensus repeats of approximately 60 amino acids. Along with a single, unique beta-chain, seven identical alpha-chains encoded by this gene assemble into the predominant isoform of C4b-binding protein, a multimeric protein that controls activation of the complement cascade through the classical pathway. The genes encoding both alpha and beta chains are located adjacent to each other on human chromosome 1 in the regulator of complement activation gene cluster. Two pseudogenes of this gene are also found in the cluster. Publication Note: This RefSeq record includes a subset of the publications that are available for this gene. Please see the Entrez Gene record to access additional publications.

**Synonyms:**

C4BP; PRP

**Note:**

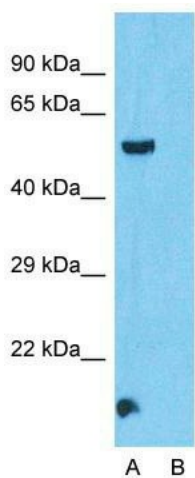
Immunogen Sequence Homology: Human: 100%

**Protein Pathways:**

Complement and coagulation cascades

**Product images:**

WB Suggested Anti-C4BPA Antibody Titration: 0.2-1 ug/ml; ELISA Titer: 1: 312500; Positive Control: MCF7 cell lysate



### Anti-C4BPA Western Blot & Peptide Block Validation

Lysate: HepG2 cell

Lane A: Primary Antibody  
Lane B: Primary Antibody + Blocking Peptide

Primary Antibody Concentration: 1.0 µg/ml  
Peptide Concentration: 5.0 µg/ml  
Lysate Quantity: 25 µg/lane  
Gel Concentration: 12%

Host: Rabbit; Target Name: C4BPA; Sample Tissue: HepG2 Whole Cell; Lane A: Primary Antibody; Lane B: Primary Antibody + Blocking Peptide; Primary Antibody Concentration: 1 µg/ml; Peptide Concentration: 5 µg/ml; Lysate Quantity: 25 µg/lane; Gel Concentration: 0.12%