

Product datasheet for **TA346044**

SFTPB Rabbit Polyclonal Antibody

Product data:

Product Type:	Primary Antibodies
Applications:	WB
Recommended Dilution:	WB
Reactivity:	Human, Mouse
Host:	Rabbit
Isotype:	IgG
Clonality:	Polyclonal
Immunogen:	The immunogen for anti-SFTPB antibody: synthetic peptide directed towards the middle region of human SFTPB. Synthetic peptide located within the following region: PGALQARPGPHTQDLSEQQFPIPLPYCWLCRALIKRIQAMIPK GALAVAV
Formulation:	Liquid. Purified antibody supplied in 1x PBS buffer with 0.09% (w/v) sodium azide and 2% sucrose. <i>Note that this product is shipped as lyophilized powder to China customers.</i>
Purification:	Affinity Purified
Conjugation:	Unconjugated
Storage:	Store at -20°C as received.
Stability:	Stable for 12 months from date of receipt.
Predicted Protein Size:	42 kDa
Gene Name:	surfactant protein B
Database Link:	NP_000533 Entrez Gene 20388 Mouse Entrez Gene 6439 Human P07988



[View online »](#)

Background:

SFTPFB is the pulmonary-associated surfactant B protein (SPB), an amphipathic surfactant protein essential for lung function and homeostasis after birth. Pulmonary surfactant is a lipid-rich material that prevents lung collapse by lowering surface tension at the air-liquid interface in the alveoli of lung. SPB enhances the rate of spreading and increases the stability of surfactant monolayers in vitro. Surfactant is composed of phospholipids and other surfactant-associated proteins. See also SFTPA1, SFTPC, and SFTPD. The SFTPFB gene encodes the pulmonary-associated surfactant B protein (SPB), an amphipathic surfactant protein essential for lung function and homeostasis after birth. Pulmonary surfactant is a lipid-rich material that prevents lung collapse by lowering surface tension at the air-liquid interface in the alveoli of lung. SPB enhances the rate of spreading and increases the stability of surfactant monolayers in vitro. Surfactant is composed of phospholipids and other surfactant-associated proteins (Clark et al., 1995 [PubMed 7644495]). See also SFTPA1 (MIM 178630), SFTPC (MIM 178620), and SFTPD (MIM 178635). [supplied by OMIM]. Publication Note: This RefSeq record includes a subset of the publications that are available for this gene. Please see the Entrez Gene record to access additional publications.

Synonyms:

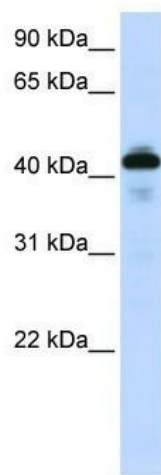
PSP-B; SFTB3; SFTP3; SMDP1; SP-B

Note:

Immunogen Sequence Homology: Dog: 100%; Pig: 100%; Rat: 100%; Human: 100%; Guinea pig: 100%; Mouse: 92%; Bovine: 86%; Rabbit: 85%; Sheep: 79%

Protein Families:

Druggable Genome, Secreted Protein

Product images:

WB Suggested Anti-SFTPFB Antibody Titration: 0.2-1 ug/ml; ELISA Titer: 1: 1562500; Positive Control: 721_B cell lysate