

## Product datasheet for **TA346039**

### Antithrombin III (SERPINC1) Rabbit Polyclonal Antibody

#### Product data:

Product Type:	Primary Antibodies
Applications:	WB
Recommended Dilution:	WB
Reactivity:	Mouse
Host:	Rabbit
Isotype:	IgG
Clonality:	Polyclonal
Immunogen:	The immunogen for anti-Serpinc1 antibody: synthetic peptide corresponding to a region of Mouse. Synthetic peptide located within the following region: AAASTSVITGRSLNPNRVTFKANRPFLVLIREVALNTIIFMGRVANPCV
Formulation:	Liquid. Purified antibody supplied in 1x PBS buffer with 0.09% (w/v) sodium azide and 2% sucrose. <i>Note that this product is shipped as lyophilized powder to China customers.</i>
Purification:	Affinity Purified
Conjugation:	Unconjugated
Storage:	Store at -20°C as received.
Stability:	Stable for 12 months from date of receipt.
Predicted Protein Size:	52 kDa
Gene Name:	serpin family C member 1
Database Link:	<a href="#">NP_000479</a> <a href="#">Entrez Gene 11905 Mouse</a> <a href="#">P01008</a>
Background:	Serpinc1 is the most important serine protease inhibitor in plasma that regulates the blood coagulation cascade. AT-III inhibits thrombin as well as factors IXa, Xa and XIa. Its inhibitory activity is greatly enhanced in the presence of heparin.
Synonyms:	AT3; AT3D; ATIII; THPH7
Note:	Immunogen Sequence Homology: Dog: 100%; Rat: 100%; Horse: 100%; Human: 100%; Mouse: 100%; Pig: 93%; Guinea pig: 93%; Sheep: 92%; Bovine: 92%; Rabbit: 92%

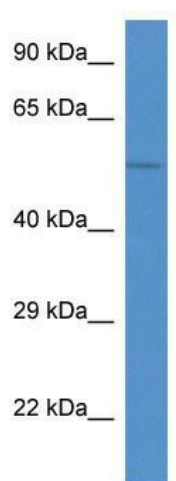


[View online »](#)

Protein Families: Druggable Genome, Secreted Protein

Protein Pathways: Complement and coagulation cascades

### Product images:



WB Suggested Anti-Serpinc1 Antibody; Titration:  
1.0 ug/ml; Positive Control: Mouse Small Intestine