

Product datasheet for **TA346038**

Antithrombin III (SERPINC1) Rabbit Polyclonal Antibody

Product data:

Product Type:	Primary Antibodies
Applications:	IHC, WB
Recommended Dilution:	WB, IHC
Reactivity:	Human
Host:	Rabbit
Isotype:	IgG
Clonality:	Polyclonal
Immunogen:	The immunogen for anti-SERPINC1 antibody: synthetic peptide directed towards the middle region of human SERPINC1. Synthetic peptide located within the following region: ISEKTSDQIHFFFAKLNCRLYRKANKSSKLVSANRLFGDKSLTFNETYQD
Formulation:	Liquid. Purified antibody supplied in 1x PBS buffer with 0.09% (w/v) sodium azide and 2% sucrose. <i>Note that this product is shipped as lyophilized powder to China customers.</i>
Purification:	Affinity Purified
Conjugation:	Unconjugated
Storage:	Store at -20°C as received.
Stability:	Stable for 12 months from date of receipt.
Predicted Protein Size:	52 kDa
Gene Name:	serpin family C member 1
Database Link:	NP_000479 Entrez Gene 462 Human P01008
Background:	The protein encoded by this gene is a plasma protease inhibitor and a member of the serpin superfamily. This protein inhibits thrombin as well as other activated serine proteases of the coagulation system, and it regulates the blood coagulation cascade.
Synonyms:	AT3; AT3D; ATIII; THPH7
Note:	Immunogen Sequence Homology: Dog: 100%; Pig: 100%; Rat: 100%; Human: 100%; Mouse: 100%; Rabbit: 100%; Horse: 93%; Sheep: 93%; Bovine: 93%; Zebrafish: 93%; Guinea pig: 93%

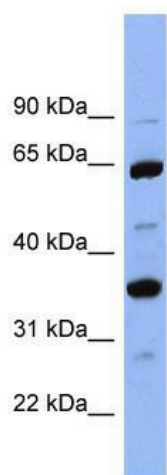


[View online »](#)

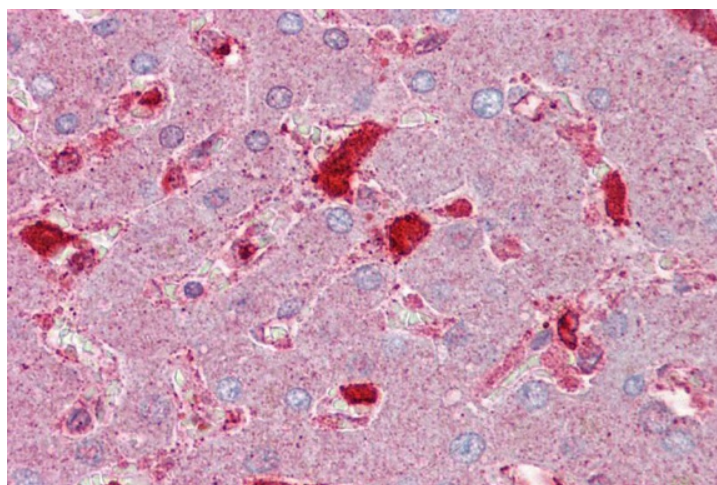
Protein Families: Druggable Genome, Secreted Protein

Protein Pathways: Complement and coagulation cascades

Product images:



WB Suggested Anti-SERPINC1 Antibody Titration:
0.2-1 ug/ml; ELISA Titer: 1: 1562500; Positive
Control: PANC1 cell lysate



Immunohistochemistry with Liver tissue at an
antibody concentration of 5 ug/ml using anti-
SERPINC1 antibody