

## Product datasheet for **TA346031**

### Myosin light chain 3 (MYL3) Rabbit Polyclonal Antibody

#### Product data:

|                         |   |
|-------------------------|---|
| Product Type:           | Primary Antibodies  |
| Applications:           | WB  |
| Recommended Dilution:   | WB  |
| Reactivity:             | Human   |
| Host:                   | Rabbit  |
| Isotype:                | IgG   |
| Clonality:              | Polyclonal  |
| Immunogen:              | The immunogen for anti-MYL3 antibody: synthetic peptide directed towards the N terminal of human MYL3. Synthetic peptide located within the following region:<br>VEFDASKIKIEFTPEQIEEFKEAFMLFDRTPKCEMKITYGQC GDVLRALG  |
| Formulation:            | Liquid. Purified antibody supplied in 1x PBS buffer with 0.09% (w/v) sodium azide and 2% sucrose.<br><i>Note that this product is shipped as lyophilized powder to China customers.</i>   |
| Purification:           | Affinity Purified   |
| Conjugation:            | Unconjugated  |
| Storage:                | Store at -20°C as received.   |
| Stability:              | Stable for 12 months from date of receipt.  |
| Predicted Protein Size: | 22 kDa  |
| Gene Name:              | myosin light chain 3  |
| Database Link:          | <a href="#">NP_000249</a><br><a href="#">Entrez Gene 4634 Human</a><br><a href="#">P08590</a>   |
| Background:             | MYL3 encodes myosin light chain 3, an alkali light chain also referred to in the literature as both the ventricular isoform and the slow skeletal muscle isoform. Mutations in MYL3 have been identified as a cause of mid-left ventricular chamber type hypertrophic cardiomyopathy. |
| Synonyms:               | CMH8; MLC1SB; MLC1V; VLC1   |



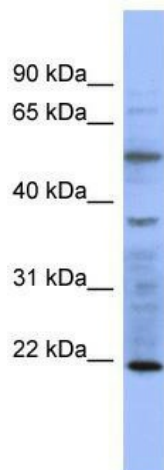
[View online »](#)

**Note:** Immunogen Sequence Homology: Dog: 100%; Pig: 100%; Rat: 100%; Horse: 100%; Human: 100%; Mouse: 100%; Bovine: 100%; Rabbit: 100%; Guinea pig: 100%; Yeast: 90%; Zebrafish: 79%

**Protein Families:** Druggable Genome

**Protein Pathways:** Cardiac muscle contraction, Dilated cardiomyopathy, Hypertrophic cardiomyopathy (HCM)

**Product images:**



WB Suggested Anti-MYL3 Antibody Titration: 0.2-1 ug/ml; ELISA Titer: 1: 1562500; Positive Control: COLO205 cell lysate MYL3 is supported by BioGPS gene expression data to be expressed in COLO205