

Product datasheet for **TA346030**

CMH1 (MYH7) Rabbit Polyclonal Antibody

Product data:

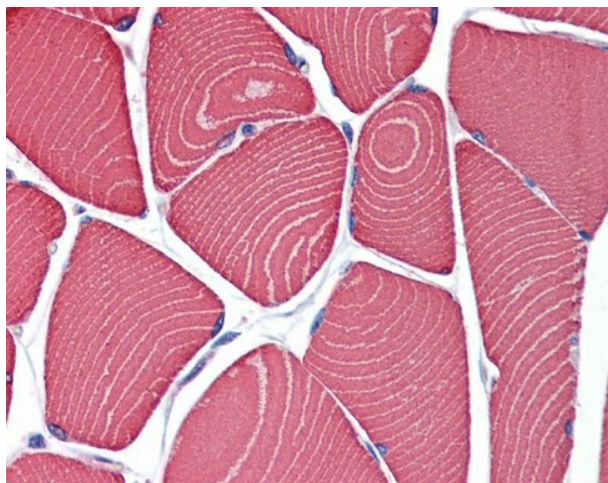
Product Type:	Primary Antibodies
Applications:	IHC
Recommended Dilution:	IHC
Reactivity:	Human
Host:	Rabbit
Isotype:	IgG
Clonality:	Polyclonal
Immunogen:	The immunogen for anti-Myh7 antibody: synthetic peptide corresponding to a region of Mouse. Synthetic peptide located within the following region: TLEDQMNEHRSKAEETQRSVNDLTSQRAKLQTENGELSRQLDEKEALISQ
Formulation:	Liquid. Purified antibody supplied in 1x PBS buffer with 0.09% (w/v) sodium azide and 2% sucrose. <i>Note that this product is shipped as lyophilized powder to China customers.</i>
Purification:	Affinity Purified
Conjugation:	Unconjugated
Storage:	Store at -20°C as received.
Stability:	Stable for 12 months from date of receipt.
Predicted Protein Size:	223 kDa
Gene Name:	myosin, heavy chain 7, cardiac muscle, beta
Database Link:	NP_000248 Entrez Gene 4625 Human P12883
Background:	Myh7 play a role in muscle contraction.
Synonyms:	CMD1S; CMH1; MPD1; MYHCB; SPMD; SPMM
Note:	Immunogen Sequence Homology: Dog: 100%; Pig: 100%; Rat: 100%; Horse: 100%; Human: 100%; Mouse: 100%; Bovine: 100%; Rabbit: 100%; Guinea pig: 100%; Zebrafish: 86%



[View online »](#)

Protein Pathways: Cardiac muscle contraction, Dilated cardiomyopathy, Hypertrophic cardiomyopathy (HCM), Tight junction, Viral myocarditis

Product images:



Skeletal muscle