

Product datasheet for **TA346028**

HSD11B2 Rabbit Polyclonal Antibody

Product data:

Product Type:	Primary Antibodies
Applications:	WB
Recommended Dilution:	WB
Reactivity:	Rat, Human
Host:	Rabbit
Isotype:	IgG
Clonality:	Polyclonal
Immunogen:	The immunogen for anti-HSD11B2 antibody: synthetic peptide directed towards the N terminal of human HSD11B2. Synthetic peptide located within the following region: ERWPWPSGGAWLLVAARALLQLLRSDLRLGRPLLAALALLAALDWLCQRL
Formulation:	Liquid. Purified antibody supplied in 1x PBS buffer with 0.09% (w/v) sodium azide and 2% sucrose. <i>Note that this product is shipped as lyophilized powder to China customers.</i>
Purification:	Affinity Purified
Conjugation:	Unconjugated
Storage:	Store at -20°C as received.
Stability:	Stable for 12 months from date of receipt.
Predicted Protein Size:	45 kDa
Gene Name:	hydroxysteroid (11-beta) dehydrogenase 2
Database Link:	NP_000187 Entrez Gene 25117 Rat Entrez Gene 3291 Human P80365
Background:	HSD11B2 catalyzes the conversion of cortisol to the inactive metabolite cortisone. It modulates intracellular glucocorticoid levels, thus protecting the nonselective mineralocorticoid receptor from occupation by glucocorticoids.
Synonyms:	AME; AME1; HSD2; HSD11K; SDR9C3
Note:	Immunogen Sequence Homology: Pig: 100%; Rat: 100%; Human: 100%; Mouse: 100%; Sheep: 100%; Bovine: 100%; Rabbit: 100%; Guinea pig: 100%; Horse: 92%

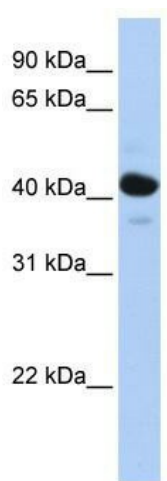


[View online »](#)

Protein Families: Druggable Genome

Protein Pathways: Androgen and estrogen metabolism, C21-Steroid hormone metabolism, Metabolic pathways

Product images:



WB Suggested Anti-HSD11B2 Antibody Titration:
0.2-1 ug/ml; ELISA Titer: 1: 62500; Positive
Control: Human Muscle