

## Product datasheet for **TA346027**

### CFHR4 Rabbit Polyclonal Antibody

#### Product data:

Product Type:	Primary Antibodies
Applications:	WB
Recommended Dilution:	WB
Reactivity:	Human
Host:	Rabbit
Isotype:	IgG
Clonality:	Polyclonal
Immunogen:	The immunogen for Anti-FHR4 antibody is: synthetic peptide directed towards the N-terminal region of Human FHR4. Synthetic peptide located within the following region: LWVSCANGQEVKPCDFPEIQHGGLYKSLRRLYFPAAAGQSYSYCDQNF
Formulation:	Liquid. Purified antibody supplied in 1x PBS buffer with 0.09% (w/v) sodium azide and 2% sucrose. <i>Note that this product is shipped as lyophilized powder to China customers.</i>
Purification:	Affinity Purified
Conjugation:	Unconjugated
Storage:	Store at -20°C as received.
Stability:	Stable for 12 months from date of receipt.
Predicted Protein Size:	63 kDa
Gene Name:	complement factor H related 4
Database Link:	<a href="#">NP_006675</a> <a href="#">Entrez Gene 10877 Human Q92496</a>



[View online »](#)

**Background:**

This gene is a member of the complement factor H (CFH) gene family, and encodes one of the 5 CFH-related (CFHR) proteins. These 5 genes are closely linked to the CFH gene on chromosome 1q31-q32. The CFHRs are secreted plasma proteins synthesized primarily by the hepatocytes, and composed of highly-related short consensus repeats (SCRs). This protein enhances the cofactor activity of CFH, and is involved in complement regulation. It can associate with lipoproteins and may play a role in lipid metabolism. Alternatively spliced transcript variants encoding different isoforms (varying in the number of SCRs) have been described for this gene.

**Synonyms:**

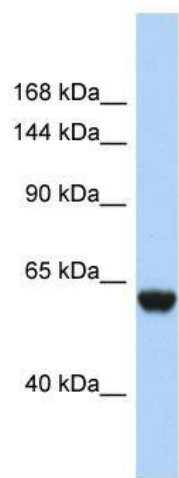
CFHL4; FHR-4; FHR4

**Note:**

Immunogen Sequence Homology: Human: 100%; Rat: 79%

**Protein Families:**

Secreted Protein

**Product images:**

Host: Rabbit; Target Name: FHR4; Sample Tissue: 721\_B Whole Cell lysates; Antibody Dilution: 1.0 ug/ml