

Product datasheet for **TA346026**

Heparin Cofactor II (SERPIND1) Rabbit Polyclonal Antibody

Product data:

Product Type:	Primary Antibodies
Applications:	WB
Recommended Dilution:	WB
Reactivity:	Human
Host:	Rabbit
Isotype:	IgG
Clonality:	Polyclonal
Immunogen:	The immunogen for anti-SERPIND1 antibody: synthetic peptide directed towards the middle region of human SERPIND1. Synthetic peptide located within the following region: VSMMQTKGNFLAANDQELDCDILQLEYVGGISMLIVPHKMSGMKTLEAQ
Formulation:	Liquid. Purified antibody supplied in 1x PBS buffer with 0.09% (w/v) sodium azide and 2% sucrose. <i>Note that this product is shipped as lyophilized powder to China customers.</i>
Purification:	Affinity Purified
Conjugation:	Unconjugated
Storage:	Store at -20°C as received.
Stability:	Stable for 12 months from date of receipt.
Predicted Protein Size:	55 kDa
Gene Name:	serpin family D member 1
Database Link:	NP_000176 Entrez Gene 3053 Human P05546
Background:	The product encoded by this gene is a serine proteinase inhibitor which rapidly inhibits thrombin in the presence of dermatan sulfate or heparin. The gene contains five exons and four introns. This protein shares homology with antithrombin III and other members of the alpha 1-antitrypsin superfamily.
Synonyms:	D22S673; HC2; HCF2; HCII; HLS2; LS2; THPH10



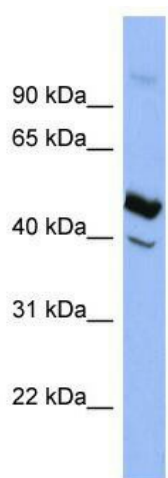
[View online »](#)

Note: Immunogen Sequence Homology: Dog: 100%; Rat: 100%; Horse: 100%; Human: 100%; Mouse: 100%; Rabbit: 100%; Pig: 93%; Guinea pig: 93%; Bovine: 86%

Protein Families: Druggable Genome

Protein Pathways: Complement and coagulation cascades

Product images:



WB Suggested Anti-SERPIND1 Antibody Titration:
0.2-1 ug/ml; ELISA Titer: 1: 1562500; Positive
Control: THP-1 cell lysate