

Product datasheet for **TA346024**

ASS1 Rabbit Polyclonal Antibody

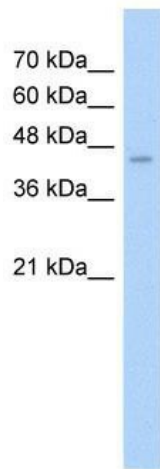
Product data:

Product Type:	Primary Antibodies
Applications:	IHC, WB
Recommended Dilution:	WB, IHC
Reactivity:	Human
Host:	Rabbit
Isotype:	IgG
Clonality:	Polyclonal
Immunogen:	The immunogen for anti-ASS antibody: synthetic peptide directed towards the N terminal of human ASS. Synthetic peptide located within the following region: YSGGLDTSCILVWLKEQGYDVIAYLANIGQKEDFEEARKKALKLGAKKVF
Formulation:	Liquid. Purified antibody supplied in 1x PBS buffer with 0.09% (w/v) sodium azide and 2% sucrose. <i>Note that this product is shipped as lyophilized powder to China customers.</i>
Purification:	Affinity Purified
Conjugation:	Unconjugated
Storage:	Store at -20°C as received.
Stability:	Stable for 12 months from date of receipt.
Predicted Protein Size:	45 kDa
Gene Name:	argininosuccinate synthase 1
Database Link:	NP_446464 Entrez Gene 445 Human P00966

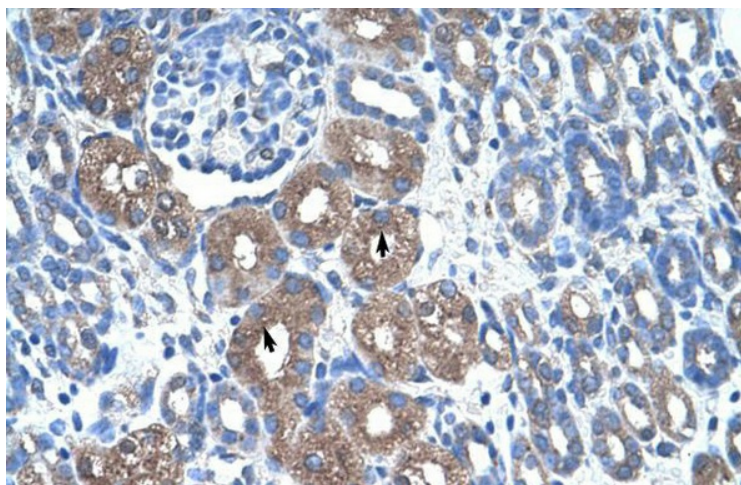


[View online »](#)

Background:	ASS catalyzes the penultimate step of the arginine biosynthetic pathway. The protein encoded by this gene catalyzes the penultimate step of the arginine biosynthetic pathway. There are approximately 10 to 14 copies of this gene including the pseudogenes scattered across the human genome, among which the one located on chromosome 9 appears to be the only functional gene for argininosuccinate synthetase. Mutations in the chromosome 9 copy of ASS cause citrullinemia. Two transcript variants encoding the same protein have been found for this gene.
Synonyms:	ASS; CTLN1
Note:	Immunogen Sequence Homology: Dog: 100%; Pig: 100%; Rat: 100%; Goat: 100%; Horse: 100%; Human: 100%; Mouse: 100%; Bovine: 100%; Guinea pig: 100%; Yeast: 86%; Zebrafish: 79%
Protein Families:	Druggable Genome
Protein Pathways:	Alanine, aspartate and glutamate metabolism, Arginine and proline metabolism, Metabolic pathways

Product images:

WB Suggested Anti-ASS Antibody Titration: 2.5 ug/ml; Positive Control: HepG2 cell lysate



Rabbit Anti-ASS Antibody; Paraffin Embedded Tissue: Human Kidney; Cellular Data: Epithelial cells of renal tubule; Antibody Concentration: 4.0-8.0 ug/ml; Magnification: 400X