

## Product datasheet for **TA346022**

### MSH5 Rabbit Polyclonal Antibody

#### Product data:

Product Type:	Primary Antibodies
Applications:	WB
Recommended Dilution:	WB
Reactivity:	Human
Host:	Rabbit
Isotype:	IgG
Clonality:	Polyclonal
Immunogen:	The immunogen for anti-MSH5 antibody: synthetic peptide directed towards the N terminal of human MSH5. Synthetic peptide located within the following region: KQRLLSGNYSFIPDAMTATEKILFLSSIIPFDCLLTPPGDLRFTPIPLLI
Formulation:	Liquid. Purified antibody supplied in 1x PBS buffer with 0.09% (w/v) sodium azide and 2% sucrose. <i>Note that this product is shipped as lyophilized powder to China customers.</i>
Purification:	Affinity Purified
Conjugation:	Unconjugated
Storage:	Store at -20°C as received.
Stability:	Stable for 12 months from date of receipt.
Predicted Protein Size:	95 kDa
Gene Name:	mutS homolog 5
Database Link:	<a href="#">NP_079535</a> <a href="#">Entrez Gene 4439 Human</a> <a href="#">O43196</a>



[View online »](#)

**Background:**

MSH5 is a member of the mutS family of proteins that are involved in DNA mismatch repair or meiotic recombination processes. This protein is similar to a *Saccharomyces cerevisiae* protein that participates in meiotic segregation fidelity and crossing-over. This protein forms heterooligomers with another member of this family, mutS homolog 4. This gene encodes a member of the mutS family of proteins that are involved in DNA mismatch repair or meiotic recombination processes. This protein is similar to a *Saccharomyces cerevisiae* protein that participates in meiotic segregation fidelity and crossing-over. This protein forms heterooligomers with another member of this family, mutS homolog 4. Alternative splicing results in four transcript variants encoding three different isoforms.

**Synonyms:**

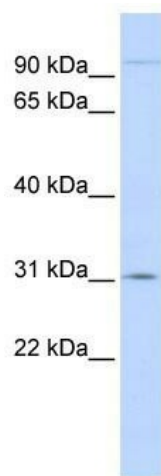
G7; MUTSH5; NG23

**Note:**

Immunogen Sequence Homology: Human: 100%

**Protein Families:**

Druggable Genome

**Product images:**

WB Suggested Anti-MSH5 Antibody Titration: 0.2-1 ug/ml; ELISA Titer: 1: 312500; Positive Control: 721\_B cell lysate. MSH5 is strongly supported by BioGPS gene expression data to be expressed in Human 721\_B cells