

Product datasheet for **TA346021**

MSH5 Rabbit Polyclonal Antibody

Product data:

Product Type:	Primary Antibodies
Applications:	WB
Recommended Dilution:	WB
Reactivity:	Human
Host:	Rabbit
Isotype:	IgG
Clonality:	Polyclonal
Immunogen:	The immunogen for anti-MSH5 antibody: synthetic peptide directed towards the N terminal of human MSH5. Synthetic peptide located within the following region: DENMTRFLGKLASQEHREPKRPEIIFLPSVDFGLEISKQRLLSGNYSFIP
Formulation:	Liquid. Purified antibody supplied in 1x PBS buffer with 0.09% (w/v) sodium azide and 2% sucrose. <i>Note that this product is shipped as lyophilized powder to China customers.</i>
Purification:	Affinity Purified
Conjugation:	Unconjugated
Storage:	Store at -20°C as received.
Stability:	Stable for 12 months from date of receipt.
Predicted Protein Size:	93 kDa
Gene Name:	mutS homolog 5
Database Link:	NP_751897 Entrez Gene 4439 Human O43196



[View online »](#)

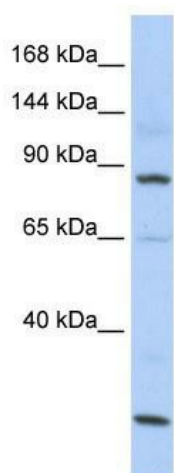
Background: MSH5 is a member of the mutS family of proteins that are involved in DNA mismatch repair or meiotic recombination processes. This protein is similar to a *Saccharomyces cerevisiae* protein that participates in meiotic segregation fidelity and crossing-over. This protein forms heterooligomers with another member of this family, mutS homolog 4. This gene encodes a member of the mutS family of proteins that are involved in DNA mismatch repair or meiotic recombination processes. This protein is similar to a *Saccharomyces cerevisiae* protein that participates in meiotic segregation fidelity and crossing-over. This protein forms heterooligomers with another member of this family, mutS homolog 4. Alternative splicing results in four transcript variants encoding three different isoforms.

Synonyms: G7; MUTSH5; NG23

Note: Immunogen Sequence Homology: Rat: 100%; Horse: 100%; Human: 100%; Bovine: 100%; Rabbit: 93%; Dog: 86%; Mouse: 86%; Pig: 79%; Guinea pig: 79%

Protein Families: Druggable Genome

Product images:



WB Suggested Anti-MSH5 Antibody Titration: 0.2-1 ug/ml; ELISA Titer: 1: 1562500; Positive Control: HepG2 cell lysate
There is BioGPS gene expression data showing that MSH5 is expressed in HepG2