

## Product datasheet for **TA346020**

### MSH4 Rabbit Polyclonal Antibody

#### Product data:

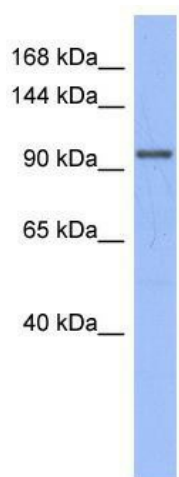
Product Type:	Primary Antibodies
Applications:	WB
Recommended Dilution:	WB
Reactivity:	Human
Host:	Rabbit
Isotype:	IgG
Clonality:	Polyclonal
Immunogen:	The immunogen for anti-MSH4 antibody: synthetic peptide directed towards the N terminal of human MSH4. Synthetic peptide located within the following region: SSARDTNYPQTLKTPPLSTGNPQRSGYKSWTPQVGYSASSSSAISAHSPSV
Formulation:	Liquid. Purified antibody supplied in 1x PBS buffer with 0.09% (w/v) sodium azide and 2% sucrose. <i>Note that this product is shipped as lyophilized powder to China customers.</i>
Purification:	Affinity Purified
Conjugation:	Unconjugated
Storage:	Store at -20°C as received.
Stability:	Stable for 12 months from date of receipt.
Predicted Protein Size:	105 kDa
Gene Name:	mutS homolog 4
Database Link:	<a href="#">NP_002431</a> <a href="#">Entrez Gene 4438 Human</a> <a href="#">O15457</a>
Background:	MSH4 is involved in meiotic recombination. MSH4 is also required for reciprocal recombination and proper segregation of homologous chromosomes at meiosis.
Synonyms:	mutS homolog 4; mutS homolog 4 (E. coli); OTTHUMP00000011349
Note:	Immunogen Sequence Homology: Human: 100%; Pig: 93%; Rat: 93%; Guinea pig: 93%; Dog: 86%; Horse: 86%; Mouse: 86%; Bovine: 86%



[View online »](#)

Protein Families: Druggable Genome

## Product images:



WB Suggested Anti-MSH4 Antibody Titration: 0.2-1 ug/ml; ELISA Titer: 1: 62500; Positive Control: PANC1 cell lysate. MSH4 is supported by BioGPS gene expression data to be expressed in PANC1