

Product datasheet for **TA346016**

MSH6 Rabbit Polyclonal Antibody

Product data:

Product Type:	Primary Antibodies
Applications:	IHC, WB
Recommended Dilution:	WB, IHC
Reactivity:	Human, Mouse
Host:	Rabbit
Isotype:	IgG
Clonality:	Polyclonal
Immunogen:	The immunogen for anti-MSH6 antibody: synthetic peptide directed towards the N terminal of human MSH6. Synthetic peptide located within the following region: ISDSESDIGGSDVEFKPDTKEEGSSDEISSGVGDSESEGLNSPVKVARKR
Formulation:	Liquid. Purified antibody supplied in 1x PBS buffer with 0.09% (w/v) sodium azide and 2% sucrose. <i>Note that this product is shipped as lyophilized powder to China customers.</i>
Purification:	Affinity Purified
Conjugation:	Unconjugated
Storage:	Store at -20°C as received.
Stability:	Stable for 12 months from date of receipt.
Predicted Protein Size:	153 kDa
Gene Name:	mutS homolog 6
Database Link:	NP_000170 Entrez Gene 17688 Mouse Entrez Gene 2956 Human P52701
Background:	This gene encodes a protein similar to the MutS protein. In E. coli, the MutS protein helps in the recognition of mismatched nucleotides, prior to their repair. A highly conserved region of approximately 150 aa, called the Walker-A adenine nucleotide binding motif, exists in MutS homologs.
Synonyms:	GTBP; GTMBP; HNPCC5; HSAP; p160



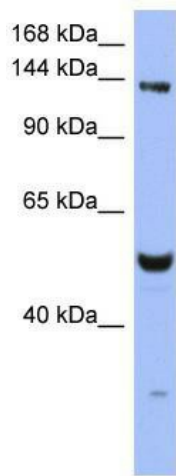
[View online »](#)

Note: Immunogen Sequence Homology: Pig: 100%; Human: 100%; Guinea pig: 100%; Dog: 93%; Rat: 93%; Horse: 93%; Bovine: 93%; Rabbit: 93%; Mouse: 86%

Protein Families: Druggable Genome, Stem cell - Pluripotency

Protein Pathways: Colorectal cancer, Mismatch repair, Pathways in cancer

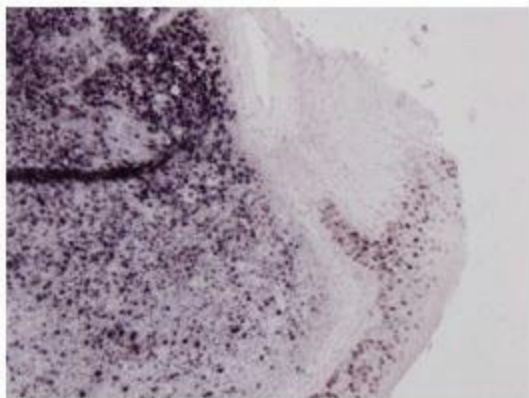
Product images:



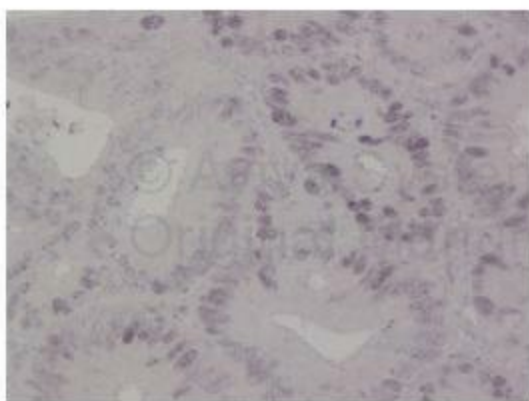
WB Suggested Anti-MSH6 Antibody Titration: 0.2-1 ug/ml; ELISA Titer: 1: 62500; Positive Control: THP-1 cell lysate



MSH6 antibody - N-terminal region validated by WB using Human B cells and Mouse B cells and Chicken B Cells at 0.8 ug/ml.



Sample Type: Human Tonsil TissuePrimary;
Dilution: 1 ug/mL



Sample Type: Human Colon CancerPrimary
Dilution: 1 ug/mL