

## Product datasheet for **TA346015**

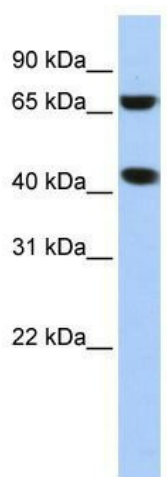
### ELAC1 Rabbit Polyclonal Antibody

#### Product data:

Product Type:	Primary Antibodies
Applications:	WB
Recommended Dilution:	WB
Reactivity:	Human
Host:	Rabbit
Isotype:	IgG
Clonality:	Polyclonal
Immunogen:	The immunogen for anti-ELAC1 antibody: synthetic peptide directed towards the N terminal of human ELAC1. Synthetic peptide located within the following region: MSMDVTF LGTGAAYPSPTRGASAVVLRCEGECWLFDCGEGTQTQLMKSQL
Formulation:	Liquid. Purified antibody supplied in 1x PBS buffer with 0.09% (w/v) sodium azide and 2% sucrose. <i>Note that this product is shipped as lyophilized powder to China customers.</i>
Purification:	Affinity Purified
Conjugation:	Unconjugated
Storage:	Store at -20°C as received.
Stability:	Stable for 12 months from date of receipt.
Predicted Protein Size:	40 kDa
Gene Name:	elaC ribonuclease Z 1
Database Link:	<a href="#">NP_061166</a> <a href="#">Entrez Gene 55520 Human Q9H777</a>
Background:	ELAC1 belongs to the RNase Z family. It is a zinc phosphodiesterase, which displays some tRNA 3'-processing endonuclease activity. The protein is probably involved in tRNA maturation, by removing a 3'-trailer from precursor tRNA.
Synonyms:	D29
Note:	Immunogen Sequence Homology: Dog: 100%; Pig: 100%; Rat: 100%; Horse: 100%; Human: 100%; Mouse: 100%; Bovine: 100%; Rabbit: 100%; Guinea pig: 100%; Zebrafish: 86%



[View online »](#)

**Product images:**

WB Suggested Anti-ELAC1 Antibody Titration: 0.2-1 ug/ml; ELISA Titer: 1: 312500; Positive Control: HepG2 cell lysate