

## Product datasheet for **TA346014**

### EFEMP1 Rabbit Polyclonal Antibody

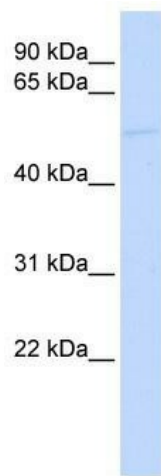
#### Product data:

Product Type:	Primary Antibodies
Applications:	WB
Recommended Dilution:	WB
Reactivity:	Human
Host:	Rabbit
Isotype:	IgG
Clonality:	Polyclonal
Immunogen:	The immunogen for anti-EFEMP1 antibody: synthetic peptide directed towards the middle region of human EFEMP1. Synthetic peptide located within the following region: KYMSIRSDRSVPSDIFQIQATTIYANTINTFRIKSGNENGEFYLRQTSPV
Formulation:	Liquid. Purified antibody supplied in 1x PBS buffer with 0.09% (w/v) sodium azide and 2% sucrose. <i>Note that this product is shipped as lyophilized powder to China customers.</i>
Purification:	Affinity Purified
Conjugation:	Unconjugated
Storage:	Store at -20°C as received.
Stability:	Stable for 12 months from date of receipt.
Predicted Protein Size:	53 kDa
Gene Name:	EGF containing fibulin like extracellular matrix protein 1
Database Link:	<a href="#">NP_004096</a> <a href="#">Entrez Gene 2202 Human</a> <a href="#">Q12805</a>



[View online »](#)

- Background:** EFEMP1 gene spans approximately 18 kb of genomic DNA and consists of 12 exons. Alternative splice patterns in the 5' UTR result in three transcript variants encoding the same extracellular matrix protein. Mutations in this gene are associated with Doyme honeycomb retinal dystrophy. This gene spans approximately 18 kb of genomic DNA and consists of 12 exons. Alternative splice patterns in the 5' UTR result in three transcript variants encoding the same extracellular matrix protein. Mutations in this gene are associated with Doyme honeycomb retinal dystrophy.
- Synonyms:** DHRD; DRAD; EGF-containing fibulin-like extracellular matrix protein 1; FBLN3; FBNL; fibrillin-like; fibulin 3; FLJ35535; MGC111353; MLVT; MTLV; S1-5
- Note:** Immunogen Sequence Homology: Dog: 100%; Pig: 100%; Rat: 100%; Horse: 100%; Human: 100%; Mouse: 100%; Bovine: 100%; Rabbit: 100%; Zebrafish: 92%; Guinea pig: 86%
- Protein Families:** Secreted Protein

**Product images:**

WB Suggested Anti-EFEMP1 Antibody Titration:  
0.2-1 ug/ml; ELISA Titer: 1: 312500; Positive  
Control: 721\_B cell lysate