

## Product datasheet for **TA346012**

### PIWIL1 Rabbit Polyclonal Antibody

#### Product data:

Product Type:	Primary Antibodies
Applications:	WB
Recommended Dilution:	WB
Reactivity:	Human
Host:	Rabbit
Isotype:	IgG
Clonality:	Polyclonal
Immunogen:	The immunogen for anti-PIWIL1 antibody: synthetic peptide directed towards the middle region of human PIWIL1. Synthetic peptide located within the following region: LTYKLCHIIYNNWPGVIRVPAPCQYAHKLAFLVGQSIHREPNLSLSNRLYY
Formulation:	Liquid. Purified antibody supplied in 1x PBS buffer with 0.09% (w/v) sodium azide and 2% sucrose. <i>Note that this product is shipped as lyophilized powder to China customers.</i>
Purification:	Affinity Purified
Conjugation:	Unconjugated
Storage:	Store at -20°C as received.
Stability:	Stable for 12 months from date of receipt.
Predicted Protein Size:	98 kDa
Gene Name:	piwi like RNA-mediated gene silencing 1
Database Link:	<a href="#">NP_004755</a> <a href="#">Entrez Gene 9271 Human</a> <a href="#">Q96J94</a>



[View online »](#)

**Background:**

PIWIL1 is a member of the PIWI subfamily of Argonaute proteins, evolutionarily conserved proteins containing both PAZ and Piwi motifs that play important roles in stem cell self-renewal, RNA silencing, and translational regulation in diverse organisms. PIWIL1 may play a role as an intrinsic regulator of the self-renewal capacity of germline and hematopoietic stem cells. This gene encodes a member of the PIWI subfamily of Argonaute proteins, evolutionarily conserved proteins containing both PAZ and Piwi motifs that play important roles in stem cell self-renewal, RNA silencing, and translational regulation in diverse organisms. The encoded protein may play a role as an intrinsic regulator of the self-renewal capacity of germline and hematopoietic stem cells.

**Synonyms:**

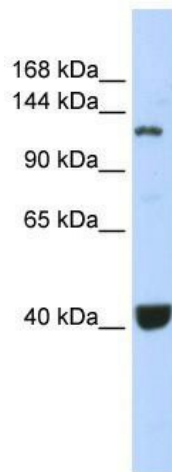
CT80.1; HIWI; MIWI; PIWI

**Note:**

Immunogen Sequence Homology: Dog: 100%; Pig: 100%; Rat: 100%; Horse: 100%; Human: 100%; Mouse: 100%; Bovine: 100%; Rabbit: 100%; Guinea pig: 100%

**Protein Pathways:**

Dorso-ventral axis formation

**Product images:**

WB Suggested Anti-PIWIL1 Antibody Titration:  
0.2-1 ug/ml; ELISA Titer: 1: 312500; Positive  
Control: CCRF-CEM cell lysate PIWIL1 is supported  
by BioGPS gene expression data to be expressed  
in CCRT-CEM