

Product datasheet for **TA346009**

CDC25B Rabbit Polyclonal Antibody

Product data:

Product Type:	Primary Antibodies
Applications:	IHC, WB
Recommended Dilution:	WB, IHC
Reactivity:	Human
Host:	Rabbit
Isotype:	IgG
Clonality:	Polyclonal
Immunogen:	The immunogen for anti-CDC25B antibody: synthetic peptide directed towards the N terminal of human CDC25B. Synthetic peptide located within the following region: TQTMHDLA GLGSETPK SQVGTLLFRSRRLTHLSLRRASESSLSESSE
Formulation:	Liquid. Purified antibody supplied in 1x PBS buffer with 0.09% (w/v) sodium azide and 2% sucrose. <i>Note that this product is shipped as lyophilized powder to China customers.</i>
Purification:	Affinity Purified
Conjugation:	Unconjugated
Storage:	Store at -20°C as received.
Stability:	Stable for 12 months from date of receipt.
Predicted Protein Size:	65 kDa
Gene Name:	cell division cycle 25B
Database Link:	NP_068659 Entrez Gene 994 Human P30305



[View online »](#)

Background:

CDC25B is a member of the CDC25 family of phosphatases. CDC25B activates the cyclin dependent kinase CDC2 by removing two phosphate groups and it is required for entry into mitosis. CDC25B shuttles between the nucleus and the cytoplasm due to nuclear localization and nuclear export signals. The protein is nuclear in the M and G1 phases of the cell cycle and moves to the cytoplasm during S and G2. CDC25B has oncogenic properties, although its role in tumor formation has not been determined. CDC25B is a member of the CDC25 family of phosphatases. CDC25B activates the cyclin dependent kinase CDC2 by removing two phosphate groups and it is required for entry into mitosis. CDC25B shuttles between the nucleus and the cytoplasm due to nuclear localization and nuclear export signals. The protein is nuclear in the M and G1 phases of the cell cycle and moves to the cytoplasm during S and G2. CDC25B has oncogenic properties, although its role in tumor formation has not been determined. Multiple transcript variants for this gene exist.

Synonyms:

cell division cycle 25 homolog B (*S. pombe*); cell division cycle 25B; OTTHUMP00000030137; OTTHUMP00000030138; OTTHUMP00000030139

Note:

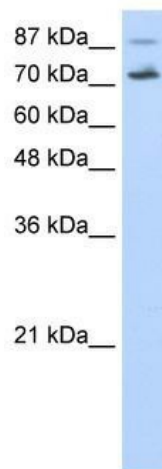
Immunogen Sequence Homology: Dog: 100%; Pig: 100%; Rat: 100%; Horse: 100%; Human: 100%; Bovine: 100%; Guinea pig: 100%; Rabbit: 93%; Mouse: 86%

Protein Families:

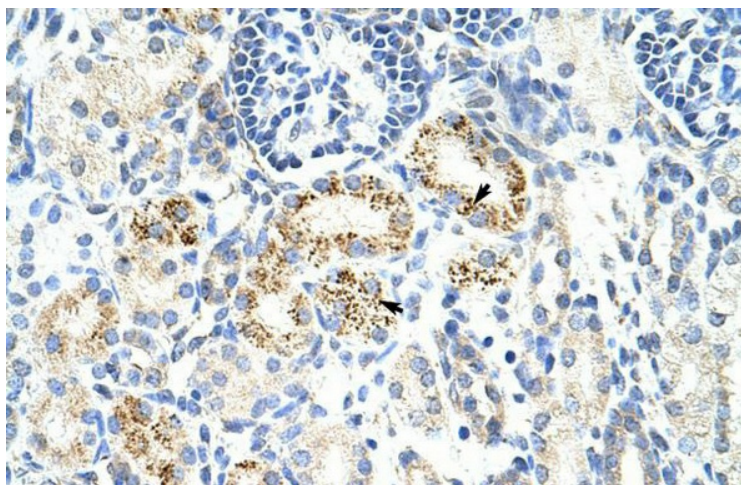
Druggable Genome, Phosphatase

Protein Pathways:

Cell cycle, MAPK signaling pathway, Progesterone-mediated oocyte maturation

Product images:

WB Suggested Anti-CDC25B Antibody Titration:
0.2-1 ug/ml; Positive Control: HepG2 cell lysate



Rabbit Anti-CDC25B Antibody; Paraffin Embedded Tissue: Human Kidney; Cellular Data: Epithelial cells of renal tubule; Antibody Concentration: 4.0-8.0 ug/ml; Magnification: 400X