

Product datasheet for **TA346004**

WDR4 Rabbit Polyclonal Antibody

Product data:

Product Type:	Primary Antibodies
Applications:	IHC, WB
Recommended Dilution:	WB, IHC
Reactivity:	Human
Host:	Rabbit
Isotype:	IgG
Clonality:	Polyclonal
Immunogen:	The immunogen for anti-WDR4 antibody: synthetic peptide directed towards the C terminal of human WDR4. Synthetic peptide located within the following region: AGADASFSSLYKATFDNVTSYLKKKEERLQQLEKKQRRRSPPPGPDGHA
Formulation:	Liquid. Purified antibody supplied in 1x PBS buffer with 0.09% (w/v) sodium azide and 2% sucrose. <i>Note that this product is shipped as lyophilized powder to China customers.</i>
Purification:	Affinity Purified
Conjugation:	Unconjugated
Storage:	Store at -20°C as received.
Stability:	Stable for 12 months from date of receipt.
Predicted Protein Size:	45 kDa
Gene Name:	WD repeat domain 4
Database Link:	NP_387510 Entrez Gene 10785 Human P57081



[View online »](#)

Background:

WDR4 is a member of the WD repeat protein family. WD repeats are minimally conserved regions of approximately 40 amino acids typically bracketed by gly-his and trp-asp (GH-WD), which may facilitate formation of heterotrimeric or multiprotein complexes. Members of this family are involved in a variety of cellular processes, including cell cycle progression, signal transduction, apoptosis, and gene regulation. This gene is excluded as a candidate for a form of nonsyndromic deafness (DFNB10), but is still a candidate for other disorders mapped to 21q22.3 as well as for the development of Down syndrome phenotypes. This gene encodes a member of the WD repeat protein family. WD repeats are minimally conserved regions of approximately 40 amino acids typically bracketed by gly-his and trp-asp (GH-WD), which may facilitate formation of heterotrimeric or multiprotein complexes. Members of this family are involved in a variety of cellular processes, including cell cycle progression, signal transduction, apoptosis, and gene regulation. This gene is excluded as a candidate for a form of nonsyndromic deafness (DFNB10), but is still a candidate for other disorders mapped to 21q22.3 as well as for the development of Down syndrome phenotypes. Two transcript variants encoding the same protein have been found for this gene.

Synonyms:

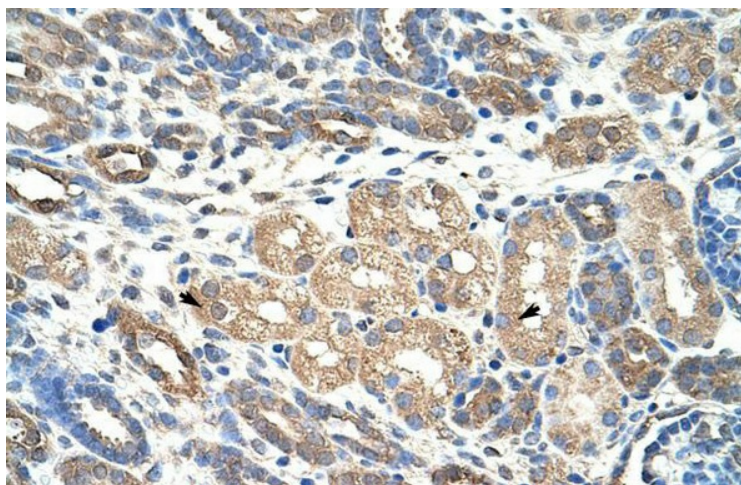
TRM82; TRMT82

Note:

Immunogen Sequence Homology: Human: 100%; Horse: 93%; Bovine: 93%; Pig: 90%; Mouse: 87%; Rabbit: 83%; Rat: 75%; Yeast: 75%

Product images:

WB Suggested Anti-WDR4 Antibody Titration: 1.25 ug/ml; Positive Control: HepG2 cell lysate



Rabbit Anti-WDR4 Antibody; Paraffin Embedded Tissue: Human Kidney; Cellular Data: Epithelial cells of renal tubule; Antibody Concentration: 4.0-8.0 ug/ml; Magnification: 400X