

## Product datasheet for **TA346002**

### WDR12 Rabbit Polyclonal Antibody

#### Product data:

Product Type:	Primary Antibodies
Applications:	WB
Recommended Dilution:	WB, IHC
Reactivity:	Human
Host:	Rabbit
Isotype:	IgG
Clonality:	Polyclonal
Immunogen:	The immunogen for anti-WDR12 antibody: synthetic peptide directed towards the C terminal of human WDR12. Synthetic peptide located within the following region: DTRSCKAPLYDLAAHEDKVLSDWTDGLLLSGGADNKLYSYRYSPTTSH
Formulation:	Liquid. Purified antibody supplied in 1x PBS buffer with 0.09% (w/v) sodium azide and 2% sucrose. <i>Note that this product is shipped as lyophilized powder to China customers.</i>
Purification:	Affinity Purified
Conjugation:	Unconjugated
Storage:	Store at -20°C as received.
Stability:	Stable for 12 months from date of receipt.
Predicted Protein Size:	47 kDa
Gene Name:	WD repeat domain 12
Database Link:	<a href="#">NP_060726</a> <a href="#">Entrez Gene 55759 Human</a> <a href="#">Q9GZL7</a>



[View online »](#)

**Background:**

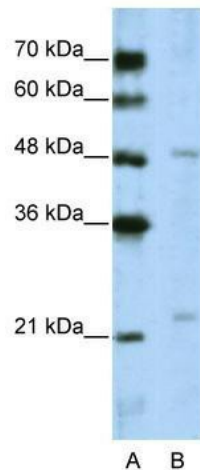
WDR12 is a member of the WD repeat protein family. WD repeats are minimally conserved regions of approximately 40 amino acids typically bracketed by gly-his and trp-asp (GH-WD), which may facilitate formation of heterotrimeric or multiprotein complexes. Members of this family are involved in a variety of cellular processes, including cell cycle progression, signal transduction, apoptosis, and gene regulation. The function of this protein is not known. This gene encodes a member of the WD repeat protein family. WD repeats are minimally conserved regions of approximately 40 amino acids typically bracketed by gly-his and trp-asp (GH-WD), which may facilitate formation of heterotrimeric or multiprotein complexes. Members of this family are involved in a variety of cellular processes, including cell cycle progression, signal transduction, apoptosis, and gene regulation. This protein is highly similar to the mouse WD repeat domain 12 protein at the amino acid level. The function of this protein is not known.

**Synonyms:**

YTM1

**Note:**

Immunogen Sequence Homology: Dog: 100%; Pig: 100%; Rat: 100%; Horse: 100%; Human: 100%; Bovine: 100%; Rabbit: 100%; Guinea pig: 100%; Mouse: 93%; Zebrafish: 89%

**Product images:**

WB Suggested Anti-WDR12 Antibody Titration: 5.0 ug/ml; Positive Control: Jurkat cell lysate. WDR12 is supported by BioGPS gene expression data to be expressed in Jurkat