

Product datasheet for **TA346001**

WDR6 Rabbit Polyclonal Antibody

Product data:

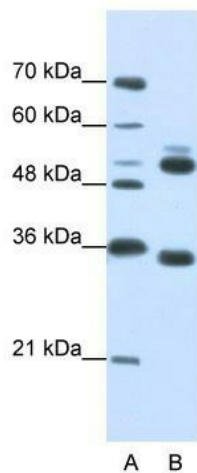
Product Type:	Primary Antibodies
Applications:	IHC, WB
Recommended Dilution:	WB, IHC
Reactivity:	Human
Host:	Rabbit
Isotype:	IgG
Clonality:	Polyclonal
Immunogen:	The immunogen for anti-WDR6 antibody: synthetic peptide directed towards the C terminal of human WDR6. Synthetic peptide located within the following region: TPSLTLQAHSCGINSLHPTREGHHLVASGSEDSLHVFLAVEMQLQE
Formulation:	Liquid. Purified antibody supplied in 1x PBS buffer with 0.09% (w/v) sodium azide and 2% sucrose.
Purification:	Affinity Purified
Conjugation:	Unconjugated
Storage:	Store at -20°C as received.
Stability:	Stable for 12 months from date of receipt.
Predicted Protein Size:	53 kDa
Gene Name:	WD repeat domain 6
Database Link:	NP_060501 Entrez Gene 11180 Human Q9NNW5
Background:	WDR6 is a member of the WD repeat protein family. WD repeats are minimally conserved regions of approximately 40 amino acids typically bracketed by gly-his and trp-aspartic acid (GH-WD), which may facilitate formation of heterotrimeric or multiprotein complexes. Members of this family are involved in a variety of cellular processes, including cell cycle progression, signal transduction, apoptosis, and gene regulation.
Synonyms:	FLJ10218; FLJ52552; FLJ56107; MGC126756; MGC142027



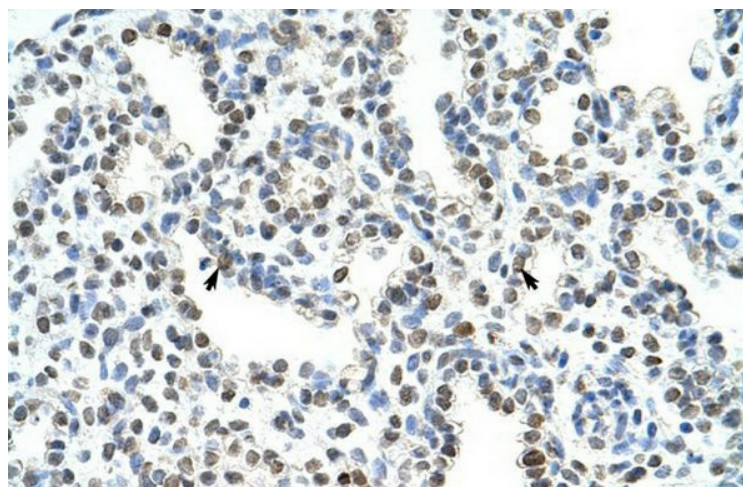
[View online »](#)

Note: Immunogen Sequence Homology: Pig: 100%; Rat: 100%; Human: 100%; Mouse: 100%; Guinea pig: 100%; Dog: 93%; Horse: 93%; Bovine: 93%; Rabbit: 93%

Product images:



WB Suggested Anti-WDR6 Antibody Titration: 0.2-1 ug/ml; Positive Control: Jurkat cell lysate WDR6 is supported by BioGPS gene expression data to be expressed in Jurkat



Rabbit Anti-WDR6 Antibody; Paraffin Embedded Tissue: Human Lung; Cellular Data: Alveolar cells; Antibody Concentration: 4.0-8.0 ug/ml; Magnification: 400X