

## Product datasheet for **TA346000**

### WDR13 Rabbit Polyclonal Antibody

#### Product data:

Product Type:	Primary Antibodies
Applications:	WB
Recommended Dilution:	WB
Reactivity:	Human
Host:	Rabbit
Isotype:	IgG
Clonality:	Polyclonal
Immunogen:	The immunogen for anti-WDR13 antibody: synthetic peptide directed towards the N terminal of human WDR13. Synthetic peptide located within the following region: GQRYGPLSEPGSARAYSNSIVRSSRTTLDRMEDFEDDPRALGARGHRRSV
Formulation:	Liquid. Purified antibody supplied in 1x PBS buffer with 0.09% (w/v) sodium azide and 2% sucrose. <i>Note that this product is shipped as lyophilized powder to China customers.</i>
Purification:	Affinity Purified
Conjugation:	Unconjugated
Storage:	Store at -20°C as received.
Stability:	Stable for 12 months from date of receipt.
Predicted Protein Size:	53 kDa
Gene Name:	WD repeat domain 13
Database Link:	<a href="#">NP_060353</a> <a href="#">Entrez Gene 64743 Human</a> <a href="#">Q9H1Z4</a>



[View online »](#)

**Background:**

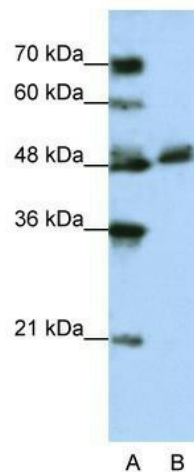
WDR13 is a member of the WD repeat protein family. WD repeats are minimally conserved regions of approximately 40 amino acids typically bracketed by gly-his and trp-asp (GH-WD), which may facilitate formation of heterotrimeric or multiprotein complexes. Members of this family are involved in a variety of cellular processes, including cell cycle progression, signal transduction, apoptosis, and gene regulation. WDR13 gene is widely expressed in various tissues, and located in chromosome X. The function of this gene has not been determined. This gene encodes a member of the WD repeat protein family. WD repeats are minimally conserved regions of approximately 40 amino acids typically bracketed by gly-his and trp-asp (GH-WD), which may facilitate formation of heterotrimeric or multiprotein complexes. Members of this family are involved in a variety of cellular processes, including cell cycle progression, signal transduction, apoptosis, and gene regulation. This gene is widely expressed in various tissues, and located in chromosome X. The function of this gene has not been determined.

**Synonyms:**

MG21

**Note:**

Immunogen Sequence Homology: Dog: 100%; Pig: 100%; Rat: 100%; Horse: 100%; Human: 100%; Mouse: 100%; Bovine: 100%; Rabbit: 100%; Guinea pig: 100%

**Product images:**

WB Suggested Anti-WDR13 Antibody Titration:  
1.25 ug/ml; Positive Control: Jurkat cell lysate