

Product datasheet for **TA345998**

WDR5 Rabbit Polyclonal Antibody

Product data:

Product Type:	Primary Antibodies
Applications:	IHC, IP, WB
Recommended Dilution:	IHC, WB, IP
Reactivity:	Human
Host:	Rabbit
Isotype:	IgG
Clonality:	Polyclonal
Immunogen:	The immunogen for anti-WDR5 antibody: synthetic peptide directed towards the C terminal of human WDR5. Synthetic peptide located within the following region: LAGHTKAVSSVKFSPNGEWLASSADKLIKWGAYDGKFEKTISGHKLG I
Formulation:	Liquid. Purified antibody supplied in 1x PBS buffer with 0.09% (w/v) sodium azide and 2% sucrose. <i>Note that this product is shipped as lyophilized powder to China customers.</i>
Purification:	Affinity Purified
Conjugation:	Unconjugated
Storage:	Store at -20°C as received.
Stability:	Stable for 12 months from date of receipt.
Predicted Protein Size:	36 kDa
Gene Name:	WD repeat domain 5
Database Link:	NP_060058 Entrez Gene 11091 Human P61964



[View online »](#)

Background:

This gene encodes a member of the WD repeat protein family. WD repeats are minimally conserved regions of approximately 40 amino acids typically bracketed by gly-his and trp-asp (GH-WD), which may facilitate formation of heterotrimeric or multiprotein complexes. Members of this family are involved in a variety of cellular processes, including cell cycle progression, signal transduction, apoptosis, and gene regulation. This protein contains 7 WD repeats. Alternatively spliced transcript variants encoding the same protein have been identified.

Synonyms:

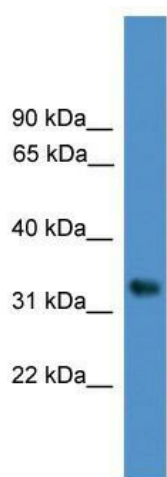
BIG-3; CFAP89; SWD3

Note:

Immunogen Sequence Homology: Dog: 100%; Pig: 100%; Rat: 100%; Horse: 100%; Human: 100%; Mouse: 100%; Bovine: 100%; Guinea pig: 100%; Zebrafish: 93%; Yeast: 91%

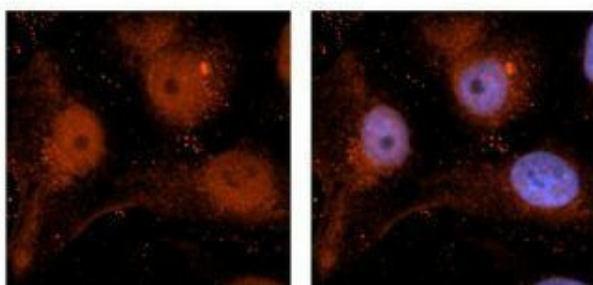
Protein Families:

Druggable Genome

Product images:


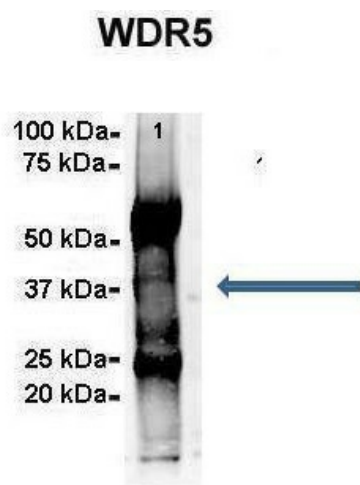
WDR5

WB Suggested Anti-WDR5 Antibody Titration: 0.2-1 ug/ml; ELISA Titer: 1: 62500; Positive Control: 721_B cell lysate



**Red: Antibody
Blue: DAPI**

Sample Type: Human brain stem cells (NT2)
Primary Antibody Dilution: 1: 500; Secondary Antibody: Goat anti-rabbit Alexa Fluor 594;
Secondary Antibody dilution: 1: 1000; Color/Signal Descriptions: Red: WDR5 Blue: DAPI; Gene Name: WDR5; Submitted by: Dr. Yuzhi Chen, University of Arkansas for Medical Science



Amount and Sample Type: 500 ug Human NT2 cell lysate; Amount of IP Antibody: 6 ug; Primary Antibody: WDR5; Primary Antibody Dilution: 1: 500; Secondary Antibody: Goat anti-rabbit Alexa-Fluor 594; Secondary Antibody Dilution: 1: 5000; Gene Name: WDR5; Submitted by: Dr. Yuzhi Chen, University of Arkansas for Medical Science