

Product datasheet for **TA345997**

KRR1 Rabbit Polyclonal Antibody

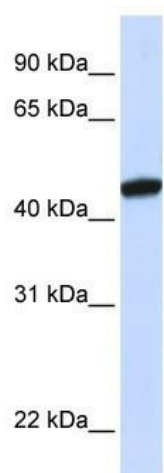
Product data:

Product Type:	Primary Antibodies
Applications:	WB
Recommended Dilution:	WB
Reactivity:	Human
Host:	Rabbit
Isotype:	IgG
Clonality:	Polyclonal
Immunogen:	The immunogen for anti-KRR1 antibody: synthetic peptide directed towards the C terminal of human KRR1. Synthetic peptide located within the following region: KANQKKRQKMEAIKAKQAEISKRQEERNKAFIPPKEKPIVKPEASTET
Formulation:	Liquid. Purified antibody supplied in 1x PBS buffer with 0.09% (w/v) sodium azide and 2% sucrose. <i>Note that this product is shipped as lyophilized powder to China customers.</i>
Purification:	Affinity Purified
Conjugation:	Unconjugated
Storage:	Store at -20°C as received.
Stability:	Stable for 12 months from date of receipt.
Predicted Protein Size:	44 kDa
Gene Name:	KRR1, small subunit processome component homolog
Database Link:	NP_008974 Entrez Gene 11103 Human Q13601
Background:	KRR1 belongs to the KRR1 family. It contains 1 KH domain. KRR1 is required for 40S ribosome biogenesis. It is involved in nucleolar processing of pre-18S ribosomal RNA and ribosome assembly.
Synonyms:	HRB2; RIP-1
Note:	Immunogen Sequence Homology: Rat: 100%; Human: 100%; Dog: 93%; Pig: 93%; Bovine: 93%; Rabbit: 93%; Guinea pig: 93%; Horse: 86%; Mouse: 86%; Zebrafish: 86%



[View online »](#)

Product images:



WB Suggested Anti-KRR1 Antibody Titration: 0.2-1 ug/ml; ELISA Titer: 1: 62500; Positive Control: Human brain