

Product datasheet for **TA345993**

CPSF6 Rabbit Polyclonal Antibody

Product data:

Product Type:	Primary Antibodies
Applications:	IF, IHC, WB
Recommended Dilution:	WB, IHC, IF
Reactivity:	Human
Host:	Rabbit
Isotype:	IgG
Clonality:	Polyclonal
Immunogen:	The immunogen for anti-CPSF6 antibody: synthetic peptide directed towards the middle region of human CPSF6. Synthetic peptide located within the following region: PPLAGPPNRGDRPPPPVLFPGQPFQPPPLGPLPPGPPPPVPGYGPPPGPP
Formulation:	Liquid. Purified antibody supplied in 1x PBS buffer with 0.09% (w/v) sodium azide and 2% sucrose. <i>Note that this product is shipped as lyophilized powder to China customers.</i>
Purification:	Protein A purified
Conjugation:	Unconjugated
Storage:	Store at -20°C as received.
Stability:	Stable for 12 months from date of receipt.
Predicted Protein Size:	61 kDa
Gene Name:	cleavage and polyadenylation specific factor 6
Database Link:	NP_008938 Entrez Gene 11052 Human Q16630



[View online »](#)

Background:

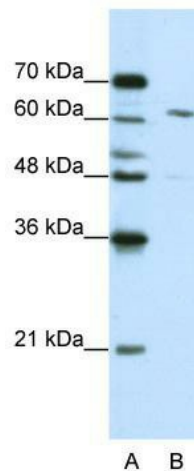
CPSF6 is one subunit of a cleavage factor required for 3' RNA cleavage and polyadenylation processing. The interaction of the protein with the RNA is one of the earliest steps in the assembly of the 3' end processing complex and facilitates the recruitment of other processing factors. The cleavage factor complex is composed of four polypeptides. The protein encoded by this gene is one subunit of a cleavage factor required for 3' RNA cleavage and polyadenylation processing. The interaction of the protein with the RNA is one of the earliest steps in the assembly of the 3' end processing complex and facilitates the recruitment of other processing factors. The cleavage factor complex is composed of four polypeptides. This gene encodes the 68kD subunit. It has a domain organization reminiscent of spliceosomal proteins.

Synonyms:

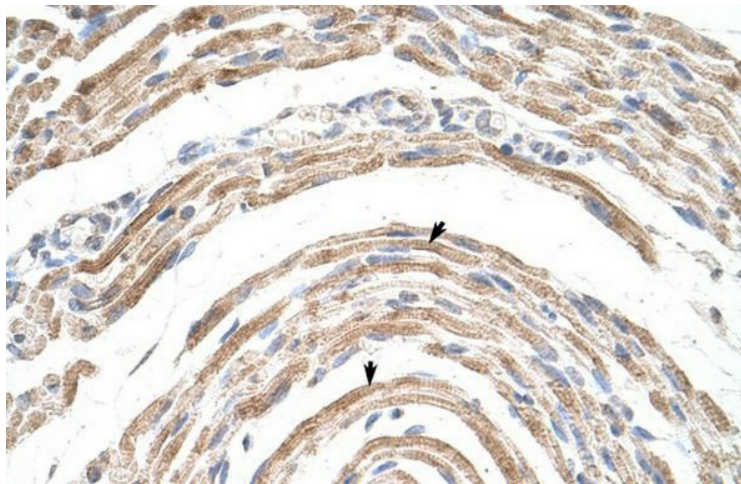
CFIM; CFIM68; HPBR11-4; HPBR11-7

Note:

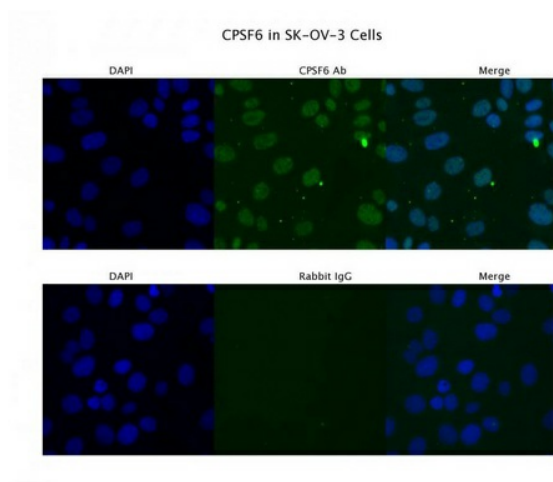
Immunogen Sequence Homology: Dog: 100%; Pig: 100%; Rat: 100%; Horse: 100%; Human: 100%; Mouse: 100%; Bovine: 100%; Rabbit: 100%; Guinea pig: 100%; Zebrafish: 79%

Product images:

WB Suggested Anti-CPSF6 Antibody Titration: 0.3125 ug/ml; ELISA Titer: 1: 1562500; Positive Control: Jurkat cell lysate CPSF6 is strongly supported by BioGPS gene expression data to be expressed in Human Jurkat cells



Rabbit Anti-CPSF6 Antibody; Paraffin Embedded Tissue: Human Muscle; Cellular Data: Skeletal muscle cells; Antibody Concentration: 4.0-8.0 ug/ml; Magnification: 400X



Sample Type: SKOV3; Primary Antibody Dilution: 4 ug/ml; Secondary Antibody: Anti-rabbit Alexa 546; Secondary Antibody Dilution: 2 ug/ml; Gene Name: CPSF6