

Product datasheet for **TA345992**

NUDT21 Rabbit Polyclonal Antibody

Product data:

Product Type:	Primary Antibodies
Applications:	IHC, WB
Recommended Dilution:	WB, IHC
Reactivity:	Human
Host:	Rabbit
Isotype:	IgG
Clonality:	Polyclonal
Immunogen:	The immunogen for anti-NUDT21 antibody: synthetic peptide directed towards the N terminal of human NUDT21. Synthetic peptide located within the following region: TGWPRGVTQFGNKYIQQTKPLTLERTINLYPLTNYTFGTKEPLYEKDSSV
Formulation:	Liquid. Purified antibody supplied in 1x PBS buffer with 0.09% (w/v) sodium azide and 2% sucrose. <i>Note that this product is shipped as lyophilized powder to China customers.</i>
Purification:	Protein A purified
Conjugation:	Unconjugated
Storage:	Store at -20°C as received.
Stability:	Stable for 12 months from date of receipt.
Predicted Protein Size:	25 kDa
Gene Name:	nudix hydrolase 21
Database Link:	NP_008937 Entrez Gene 11051 Human O43809



[View online »](#)

Background:

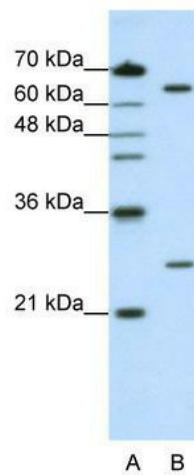
NUDT21 is one subunit of a cleavage factor required for 3' RNA cleavage and polyadenylation processing. The interaction of the protein with the RNA is one of the earliest steps in the assembly of the 3' end processing complex and facilitates the recruitment of other processing factors. The protein encoded by this gene is one subunit of a cleavage factor required for 3' RNA cleavage and polyadenylation processing. The interaction of the protein with the RNA is one of the earliest steps in the assembly of the 3' end processing complex and facilitates the recruitment of other processing factors. This gene encodes the 25kD subunit of the protein complex, which is composed of four polypeptides.

Synonyms:

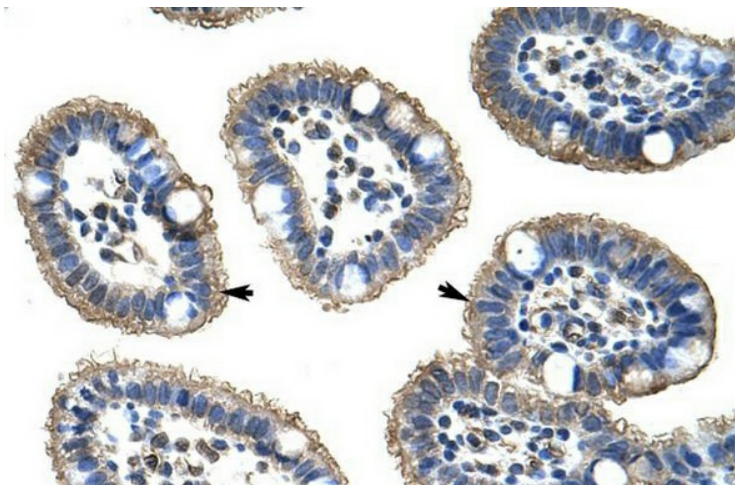
CFIM25; CPSF5

Note:

Immunogen Sequence Homology: Dog: 100%; Pig: 100%; Rat: 100%; Horse: 100%; Human: 100%; Mouse: 100%; Bovine: 100%; Rabbit: 100%; Zebrafish: 100%; Guinea pig: 100%

Product images:


WB Suggested Anti-NUDT21 Antibody Titration:
1.25 ug/ml; ELISA Titer: 1: 312500; Positive
Control: HepG2 cell lysate



Rabbit Anti-NUDT21 Antibody; Paraffin
Embedded Tissue: Human Intestine; Cellular
Data: Epithelial cells of intestinal villas; Antibody
Concentration: 4.0-8.0 ug/ml; Magnification: 400X