

Product datasheet for **TA345991**

SNRPD1 Rabbit Polyclonal Antibody

Product data:

Product Type:	Primary Antibodies
Applications:	IHC, WB
Recommended Dilution:	WB, IHC
Reactivity:	Human
Host:	Rabbit
Isotype:	IgG
Clonality:	Polyclonal
Immunogen:	The immunogen for anti-SNRPD1 antibody: synthetic peptide directed towards the N terminal of human SNRPD1. Synthetic peptide located within the following region: NGTQVHGTITGVDVSMNTHLKAVKMTLKNREPVQLETLSIRGNNIRYFIL
Formulation:	Liquid. Purified antibody supplied in 1x PBS buffer with 0.09% (w/v) sodium azide and 2% sucrose. <i>Note that this product is shipped as lyophilized powder to China customers.</i>
Purification:	Affinity Purified
Conjugation:	Unconjugated
Storage:	Store at -20°C as received.
Stability:	Stable for 12 months from date of receipt.
Predicted Protein Size:	13 kDa
Gene Name:	small nuclear ribonucleoprotein D1 polypeptide
Database Link:	NP_008869 Entrez Gene 6632 Human P62314
Background:	SNRPD1 is a small nuclear ribonucleoprotein that belongs to the SNRNP core protein family. The protein may act as a charged protein scaffold to promote SNRNP assembly or strengthen SNRNP-SNRNP interactions through nonspecific electrostatic contacts with RNA. This gene encodes a small nuclear ribonucleoprotein that belongs to the SNRNP core protein family. The protein may act as a charged protein scaffold to promote SNRNP assembly or strengthen SNRNP-SNRNP interactions through nonspecific electrostatic contacts with RNA.



[View online »](#)

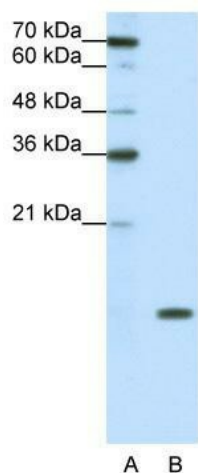
Synonyms: HsT2456; Sm-D1; SMD1; SNRPD

Note: Immunogen Sequence Homology: Dog: 100%; Pig: 100%; Rat: 100%; Horse: 100%; Human: 100%; Mouse: 100%; Bovine: 100%; Rabbit: 100%; Guinea pig: 100%; Zebrafish: 86%; Yeast: 79%

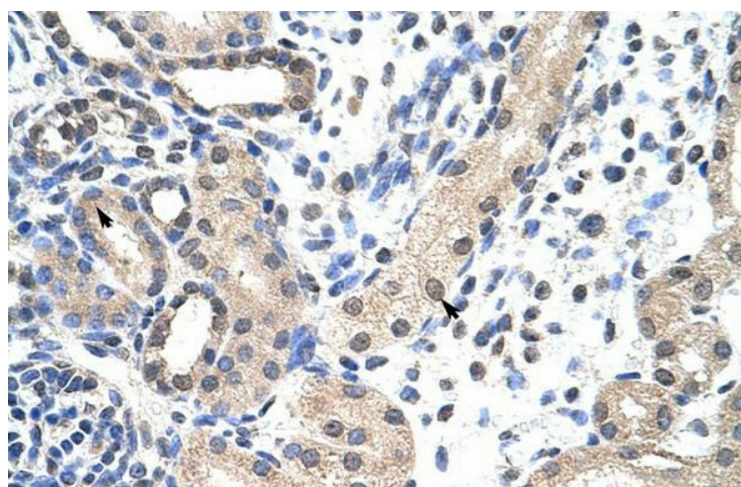
Protein Families: Druggable Genome, Stem cell - Pluripotency

Protein Pathways: Spliceosome, Systemic lupus erythematosus

Product images:



WB Suggested Anti-SNRPD1 Antibody Titration: 0.2-1 ug/ml; ELISA Titer: 1: 312500; Positive Control: Jurkat cell lysate SNRPD1 is strongly supported by BioGPS gene expression data to be expressed in Human Jurkat cells



Rabbit Anti-SNRPD1 Antibody; Paraffin Embedded Tissue: Human Kidney; Cellular Data: Epithelial cells of renal tubule; Antibody Concentration: 4.0-8.0 ug/ml; Magnification: 400X