

## Product datasheet for **TA345985**

### APOBEC2 Rabbit Polyclonal Antibody

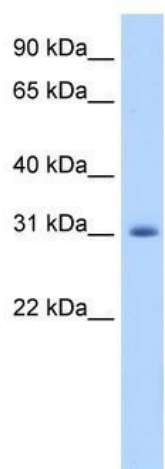
#### Product data:

Product Type:	Primary Antibodies
Applications:	IHC, WB
Recommended Dilution:	WB, IHC
Reactivity:	Human
Host:	Rabbit
Isotype:	IgG
Clonality:	Polyclonal
Immunogen:	The immunogen for anti-APOBEC2 antibody: synthetic peptide directed towards the N terminal of human APOBEC2. Synthetic peptide located within the following region: VATEAASQNGEDLENLDDPEKLELIEPPEIVTGERLPANFFKFQFRN
Formulation:	Liquid. Purified antibody supplied in 1x PBS buffer with 0.09% (w/v) sodium azide and 2% sucrose. <i>Note that this product is shipped as lyophilized powder to China customers.</i>
Purification:	Protein A purified
Conjugation:	Unconjugated
Storage:	Store at -20°C as received.
Stability:	Stable for 12 months from date of receipt.
Predicted Protein Size:	25 kDa
Gene Name:	apolipoprotein B mRNA editing enzyme catalytic subunit 2
Database Link:	<a href="#">NP_006780</a> <a href="#">Entrez Gene 10930 Human Q9Y235</a>
Background:	APOBEC2 belongs to the cytidine and deoxycytidylate deaminase family. It is probable C to U editing enzyme whose physiological substrate is not yet known. It does not display detectable apoB mRNA editing and has a low intrinsic cytidine deaminase activity.
Synonyms:	ARCD1; ARP1
Note:	Immunogen Sequence Homology: Dog: 100%; Human: 100%; Horse: 93%; Bovine: 93%; Rabbit: 93%; Pig: 90%; Rat: 90%; Guinea pig: 90%; Mouse: 86%

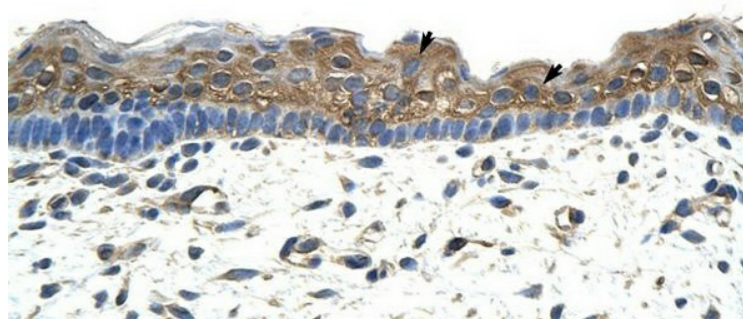


[View online »](#)

## Product images:



WB Suggested Anti-APOBEC2 Antibody Titration: 1.25 ug/ml; ELISA Titer: 1: 62500; Positive Control: Human Muscle



Rabbit Anti-APOBEC2 Antibody; Paraffin Embedded Tissue: Human Skin; Cellular Data: Squamous epithelial cells; Antibody Concentration: 4.0-8.0 ug/ml; Magnification: 400X