

## Product datasheet for **TA345982**

### **SURF6 Rabbit Polyclonal Antibody**

#### **Product data:**

Product Type:	Primary Antibodies
Applications:	WB
Recommended Dilution:	WB
Reactivity:	Human
Host:	Rabbit
Isotype:	IgG
Clonality:	Polyclonal
Immunogen:	The immunogen for anti-SURF6 antibody: synthetic peptide directed towards the N terminal of human SURF6. Synthetic peptide located within the following region: ICSHSAPEQQARTRAGKTQGSETAGPPKKRKKKTQKKFRKREEKAAEHKA
Formulation:	Liquid. Purified antibody supplied in 1x PBS buffer with 0.09% (w/v) sodium azide and 2% sucrose. <i>Note that this product is shipped as lyophilized powder to China customers.</i>
Purification:	Protein A purified
Conjugation:	Unconjugated
Storage:	Store at -20°C as received.
Stability:	Stable for 12 months from date of receipt.
Predicted Protein Size:	40 kDa
Gene Name:	surfeit 6
Database Link:	<a href="#">NP_006744</a> <a href="#">Entrez Gene 6838 Human</a> <a href="#">O75683</a>



[View online »](#)

**Background:**

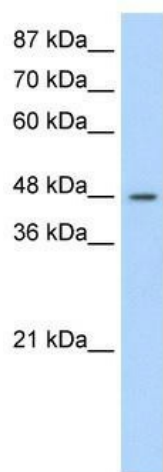
This gene is located in the surfeit gene cluster, a group of very tightly linked genes that do not share sequence similarity. The gene demonstrates features of a housekeeping gene, being ubiquitously expressed, and the encoded protein has been localized to the nucleolus. The protein includes motifs found in both the mouse and fish orthologs, which suggests a putative function as a nucleolar-matrix protein with nucleic acid-binding properties, based on characteristics determined in mouse. This gene is located in the surfeit gene cluster, a group of very tightly linked genes that do not share sequence similarity. The gene demonstrates features of a housekeeping gene, being ubiquitously expressed, and the encoded protein has been localized to the nucleolus. The protein includes motifs found in both the mouse and fish orthologs, which suggests a putative function as a nucleolar-matrix protein with nucleic acid-binding properties, based on characteristics determined in mouse. This gene is located in the surfeit gene cluster, a group of very tightly linked genes that do not share sequence similarity. The gene demonstrates features of a housekeeping gene, being ubiquitously expressed, and the encoded protein has been localized to the nucleolus. The protein includes motifs found in both the mouse and fish orthologs, which suggests a putative function as a nucleolar-matrix protein with nucleic acid-binding properties, based on characteristics determined in mouse.

**Synonyms:**

RRP14

**Note:**

Immunogen Sequence Homology: Human: 100%; Mouse: 100%; Pig: 92%; Guinea pig: 92%; Rat: 86%; Bovine: 77%

**Product images:**

WB Suggested Anti-SURF6 Antibody Titration: 1.25 ug/ml; Positive Control: Jurkat cell lysate