

Product datasheet for **TA345980**

POP4 Rabbit Polyclonal Antibody

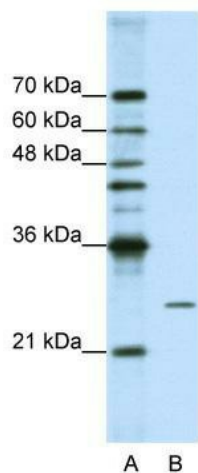
Product data:

Product Type:	Primary Antibodies
Applications:	IHC, WB
Recommended Dilution:	WB, IHC
Reactivity:	Human
Host:	Rabbit
Isotype:	IgG
Clonality:	Polyclonal
Immunogen:	The immunogen for anti-POP4 antibody: synthetic peptide directed towards the C terminal of human POP4. Synthetic peptide located within the following region: EDRLKVIPKLNCFVETDGFISYIYGSKFQLRSSERSAKKFKAKGTIDL
Formulation:	Liquid. Purified antibody supplied in 1x PBS buffer with 0.09% (w/v) sodium azide and 2% sucrose. <i>Note that this product is shipped as lyophilized powder to China customers.</i>
Purification:	Protein A purified
Conjugation:	Unconjugated
Storage:	Store at -20°C as received.
Stability:	Stable for 12 months from date of receipt.
Predicted Protein Size:	24 kDa
Gene Name:	POP4 homolog, ribonuclease P/MRP subunit
Database Link:	NP_006618 Entrez Gene 10775 Human O95707
Background:	POP4 is a part of ribonuclease P, a protein complex that generates mature tRNA molecules by cleaving their 5'-ends. It may function with RPP38 to coordinate the nucleolar targeting and/or assembly of RNase P.
Synonyms:	RPP29
Note:	Immunogen Sequence Homology: Dog: 100%; Pig: 100%; Rat: 100%; Horse: 100%; Human: 100%; Bovine: 100%; Rabbit: 100%; Guinea pig: 100%; Mouse: 93%; Zebrafish: 92%; Yeast: 91%

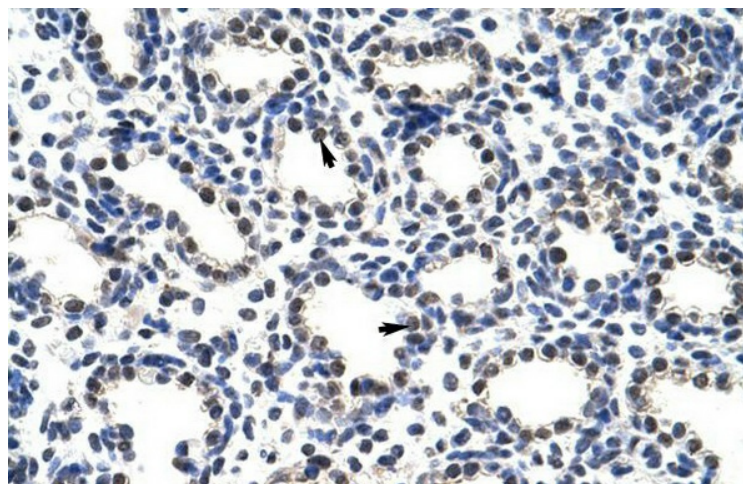


[View online »](#)

Product images:



WB Suggested Anti-POP4 Antibody Titration: 1.25 ug/ml; ELISA Titer: 1: 312500; Positive Control: HepG2 cell lysate



Rabbit Anti-POP4 Antibody; Paraffin Embedded Tissue: Human Lung; Cellular Data: Alveolar cells; Antibody Concentration: 4.0-8.0 ug/ml; Magnification: 400X