

Product datasheet for **TA345979**

FUSIP1 (SRSF10) Rabbit Polyclonal Antibody

Product data:

| | |
|--------------------------------|---|
| Product Type: | Primary Antibodies |
| Applications: | WB |
| Recommended Dilution: | WB |
| Reactivity: | Human |
| Host: | Rabbit |
| Isotype: | IgG |
| Clonality: | Polyclonal |
| Immunogen: | The immunogen for anti-FUSIP1 antibody: synthetic peptide directed towards the N terminal of human FUSIP1. Synthetic peptide located within the following region: MSRYLRPPNTSLFVRNVADDTRSEDLRREFGRYGPVVDVYVPLDFYTRRP |
| Formulation: | Liquid. Purified antibody supplied in 1x PBS buffer with 0.09% (w/v) sodium azide and 2% sucrose. <i>Note that this product is shipped as lyophilized powder to China customers.</i> |
| Purification: | Affinity Purified |
| Conjugation: | Unconjugated |
| Storage: | Store at -20°C as received. |
| Stability: | Stable for 12 months from date of receipt. |
| Predicted Protein Size: | 31 kDa |
| Gene Name: | serine/arginine-rich splicing factor 10 |
| Database Link: | NP_473357 Entrez Gene 10772 Human O75494 |
| Background: | FUSIP1 is a member of the serine-arginine (SR) family of proteins, which is involved in constitutive and regulated RNA splicing. Members of this family are characterized by N-terminal RNP1 and RNP2 motifs, which are required for binding to RNA, and multip |
| Synonyms: | FUSIP1; FUSIP2; NSSR; PPP1R149; SFRS13; SFRS13A; SRp38; SRp40; TASR; TASR1; TASR2 |
| Note: | Immunogen Sequence Homology: Pig: 100%; Rat: 100%; Human: 100%; Mouse: 100%; Bovine: 100%; Rabbit: 100%; Guinea pig: 100%; Dog: 93% |

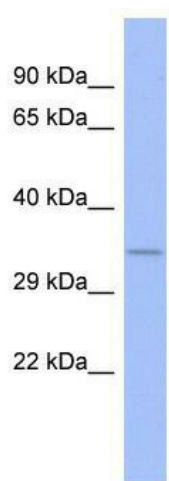


[View online »](#)

Protein Families: Transcription Factors

Protein Pathways: Spliceosome

Product images:



WB Suggested Anti-FUSIP1 Antibody Titration:
0.2-1 ug/ml; ELISA Titer: 1: 312500; Positive
Control: Human Thymus