

Product datasheet for **TA345978**

CELF2 Rabbit Polyclonal Antibody

Product data:

Product Type:	Primary Antibodies
Applications:	WB
Recommended Dilution:	IHC, WB
Reactivity:	Human
Host:	Rabbit
Isotype:	IgG
Clonality:	Polyclonal
Immunogen:	The immunogen for anti-CUGBP2 antibody: synthetic peptide directed towards the N terminal of human CUGBP2. Synthetic peptide located within the following region: TSAFKLDFLPDMMVEGRLLVPDRINGTANKMNGALDHSDQDPDAIKMFV
Formulation:	Liquid. Purified antibody supplied in 1x PBS buffer with 0.09% (w/v) sodium azide and 2% sucrose. <i>Note that this product is shipped as lyophilized powder to China customers.</i>
Purification:	Affinity Purified
Conjugation:	Unconjugated
Storage:	Store at -20°C as received.
Stability:	Stable for 12 months from date of receipt.
Predicted Protein Size:	56 kDa
Gene Name:	CUGBP, Elav-like family member 2
Database Link:	NP_006552 Entrez Gene 10659 Human O95319



[View online »](#)

Background:

CUGBP2 is a member of the CELF/BRUNOL protein family, which contains two N-terminal RNA recognition motif (RRM) domains, one C-terminal RRM domain, and a divergent segment of 160-230 aa between the second and third RRM domains. Members of CUGBP2 family regulate pre-mRNA alternative splicing and may also be involved in mRNA editing, and translation. If alternative splicing were to result, multiple transcript variants encoding different isoforms would appear. Members of the CELF/BRUNOL protein family contain two N-terminal RNA recognition motif (RRM) domains, one C-terminal RRM domain, and a divergent segment of 160-230 aa between the second and third RRM domains. Members of this protein family regulate pre-mRNA alternative splicing and may also be involved in mRNA editing, and translation. Alternative splicing results in multiple transcript variants encoding different isoforms.

Synonyms:

BRUNOL3; CUGBP2; ETR-3; ETR3; NAPOR

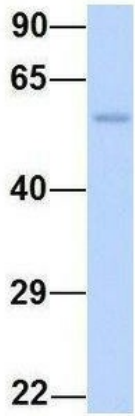
Note:

Immunogen Sequence Homology: Human: 100%; Bovine: 100%

Product images:

WB Suggested Anti-CUGBP2 Antibody Titration:
0.2-1 ug/ml; ELISA Titer: 1: 62500; Positive
Control: Human Lung

CELF2



Rabbit Anti-CELF2
Sample Type: Human Fetal Heart
Antibody Concentration: 1ug/mL

Host: Rabbit; Target Name: CELF2; Sample Tissue: Human Fetal Heart; Antibody Dilution: 1.0 ug/ml