

Product datasheet for **TA345977**

SAM68 (KHDRBS1) Rabbit Polyclonal Antibody

Product data:

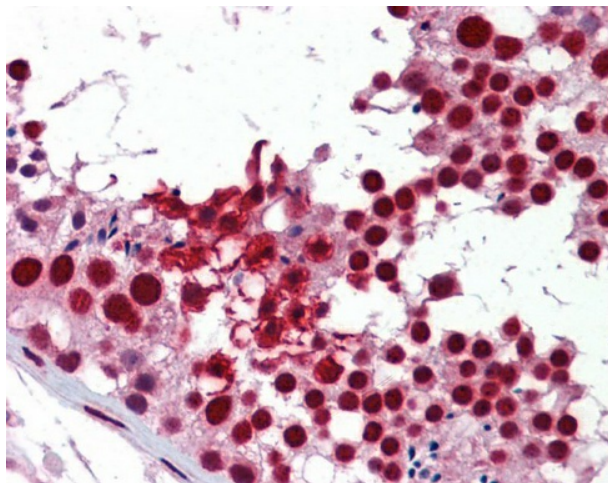
Product Type:	Primary Antibodies
Applications:	IHC
Recommended Dilution:	WB, IHC
Reactivity:	Human
Host:	Rabbit
Isotype:	IgG
Clonality:	Polyclonal
Immunogen:	The immunogen for anti-KHDRBS1 antibody: synthetic peptide directed towards the middle region of human KHDRBS1. Synthetic peptide located within the following region: PPPAPETYEYGYDDTYAEQSYEGYEGYYSQSQGDSEYYDYGHGEVQDSY
Formulation:	Liquid. Purified antibody supplied in 1x PBS buffer with 0.09% (w/v) sodium azide and 2% sucrose. <i>Note that this product is shipped as lyophilized powder to China customers.</i>
Purification:	Affinity Purified
Conjugation:	Unconjugated
Storage:	Store at -20°C as received.
Stability:	Stable for 12 months from date of receipt.
Predicted Protein Size:	48 kDa
Gene Name:	KH RNA binding domain containing, signal transduction associated 1
Database Link:	NP_006550 Entrez Gene 10657 Human Q07666
Background:	KHDRBS1 recruited and tyrosine phosphorylated by several receptor systems, for example the T-cell, leptin and insulin receptors. Once phosphorylated, KHDRBS1 functions as an adapter protein in signal transduction cascades by binding to SH2 and SH3 domain-
Synonyms:	p62; p68; Sam68
Note:	Immunogen Sequence Homology: Dog: 100%; Pig: 100%; Rat: 100%; Human: 100%; Bovine: 100%; Rabbit: 100%; Guinea pig: 100%; Mouse: 93%



[View online »](#)

Protein Families: Transcription Factors

Product images:



Testis