

Product datasheet for **TA345976**

SAM68 (KHDRBS1) Rabbit Polyclonal Antibody

Product data:

Product Type:	Primary Antibodies
Applications:	IHC, WB
Recommended Dilution:	WB
Reactivity:	Human
Host:	Rabbit
Isotype:	IgG
Clonality:	Polyclonal
Immunogen:	The immunogen for anti-KHDRBS1 antibody: synthetic peptide directed towards the N terminal of human KHDRBS1. Synthetic peptide located within the following region: LPELMAEKDSLDPSTHAMQLLTAEIEKIQKGDSSKKDDEENYLDLFSHKN
Formulation:	Liquid. Purified antibody supplied in 1x PBS buffer with 0.09% (w/v) sodium azide and 2% sucrose. <i>Note that this product is shipped as lyophilized powder to China customers.</i>
Purification:	Affinity Purified
Conjugation:	Unconjugated
Storage:	Store at -20°C as received.
Stability:	Stable for 12 months from date of receipt.
Predicted Protein Size:	48 kDa
Gene Name:	KH RNA binding domain containing, signal transduction associated 1
Database Link:	NP_006550 Entrez Gene 10657 Human Q07666



[View online »](#)

Background:

KHDRBS1 recruited and tyrosine phosphorylated by several receptor systems, for example the T-cell, leptin and insulin receptors. Once phosphorylated, KHDRBS1 functions as an adapter protein in signal transduction cascades by binding to SH2 and SH3 domain-containing proteins. KHDRBS1 play a role in G2-M progression in the cell cycle. It represses CBP-dependent transcriptional activation apparently by competing with other nuclear factors for binding to CBP. KHDRBS1 also acts as a putative regulator of mRNA stability and/or translation rates and mediates mRNA nuclear export.

Synonyms:

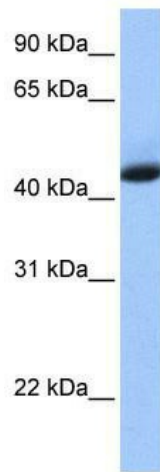
p62; p68; Sam68

Note:

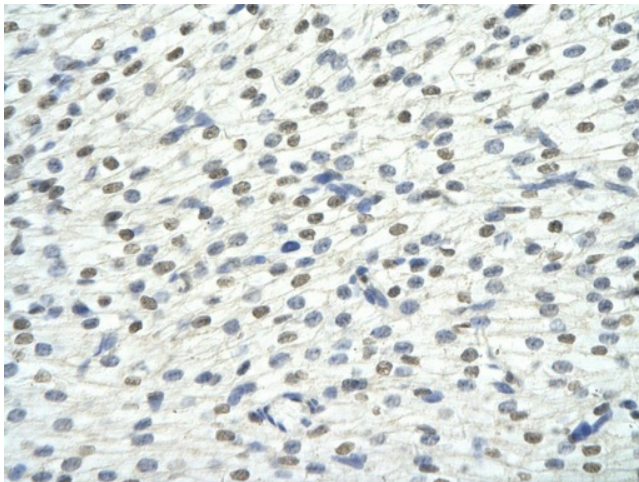
Immunogen Sequence Homology: Dog: 100%; Pig: 100%; Rat: 100%; Horse: 100%; Human: 100%; Bovine: 100%; Rabbit: 100%; Guinea pig: 100%; Mouse: 93%

Protein Families:

Transcription Factors

Product images:


WB Suggested Anti-KHDRBS1 Antibody Titration: 0.2-1 ug/ml; Positive Control: Human heart



Rabbit Anti-KHDRBS1 antibody; Paraffin Embedded Tissue: Human Heart cell Cellular Data: cardiac cell of renal tubule; Antibody Concentration: 4.0-8.0 ug/ml; Magnification: 400X