

Product datasheet for **TA345975**

KHDRBS3 Rabbit Polyclonal Antibody

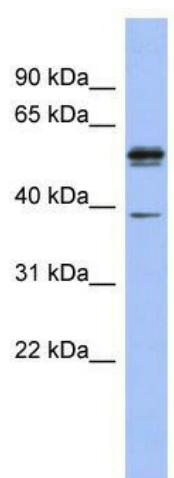
Product data:

Product Type:	Primary Antibodies
Applications:	WB
Recommended Dilution:	WB
Reactivity:	Human
Host:	Rabbit
Isotype:	IgG
Clonality:	Polyclonal
Immunogen:	The immunogen for anti-KHDRBS3 antibody: synthetic peptide directed towards the N terminal of human KHDRBS3. Synthetic peptide located within the following region: MEEKYLP EL MAEKDSL DPS FTHALRLVNQEIEK FQ KGEGKDEEKYIDWVI
Formulation:	Liquid. Purified antibody supplied in 1x PBS buffer with 0.09% (w/v) sodium azide and 2% sucrose. <i>Note that this product is shipped as lyophilized powder to China customers.</i>
Purification:	Affinity Purified
Conjugation:	Unconjugated
Storage:	Store at -20°C as received.
Stability:	Stable for 12 months from date of receipt.
Predicted Protein Size:	39 kDa
Gene Name:	KH RNA binding domain containing, signal transduction associated 3
Database Link:	NP_006549 Entrez Gene 10656 Human O75525
Background:	As a RNA-binding protein, KHDRBS3 plays a role in the regulation of alternative splicing and influences mRNA splice site selection and exon inclusion. KHDRBS3 may play a role as a negative regulator of cell growth. It inhibits cell proliferation and invol
Synonyms:	Etle; etoile; SALP; SLM-2; SLM2; T-STAR; TSTAR
Note:	Immunogen Sequence Homology: Dog: 100%; Pig: 100%; Rat: 100%; Horse: 100%; Human: 100%; Bovine: 100%; Rabbit: 100%; Guinea pig: 100%; Mouse: 93%



[View online »](#)

Product images:



WB Suggested Anti-KHDRBS3 Antibody Titration:
0.2-1 ug/ml; ELISA Titer: 1: 62500; Positive
Control: Human Stomach