

Product datasheet for **TA345974**

KHDRBS3 Rabbit Polyclonal Antibody

Product data:

| | |
|-------------------------|---|
| Product Type: | Primary Antibodies |
| Applications: | IHC, WB |
| Recommended Dilution: | WB, IHC |
| Reactivity: | Human |
| Host: | Rabbit |
| Isotype: | IgG |
| Clonality: | Polyclonal |
| Immunogen: | The immunogen for anti-KHDRBS3 antibody: synthetic peptide directed towards the C terminal of human KHDRBS3. Synthetic peptide located within the following region: EQSYDSYDNSYSTPAQSGADYYDYGHLSEETYDSYGQEEWTNSRHKAPS |
| Formulation: | Liquid. Purified antibody supplied in 1x PBS buffer with 0.09% (w/v) sodium azide and 2% sucrose. <i>Note that this product is shipped as lyophilized powder to China customers.</i> |
| Purification: | Affinity Purified |
| Conjugation: | Unconjugated |
| Storage: | Store at -20°C as received. |
| Stability: | Stable for 12 months from date of receipt. |
| Predicted Protein Size: | 38 kDa |
| Gene Name: | KH RNA binding domain containing, signal transduction associated 3 |
| Database Link: | NP_006549 Entrez Gene 10656 Human O75525 |



[View online »](#)

Background:

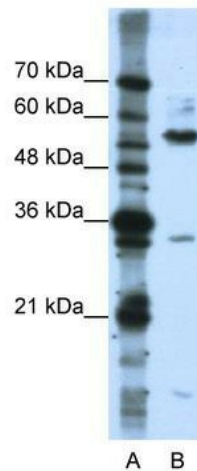
As a RNA-binding protein, KHDRBS3 plays a role in the regulation of alternative splicing and influences mRNA splice site selection and exon inclusion. KHDRBS3 may play a role as a negative regulator of cell growth. It inhibits cell proliferation and involved in splice site selection of vascular endothelial growth factor. It induces an increased concentration-dependent incorporation of exon in CD44 pre-mRNA by direct binding to purine-rich exonic enhancer. RNA-binding abilities are down-regulated by tyrosine kinase PTK6. It also involved in post-transcriptional regulation of HIV-1 gene expression.

Synonyms:

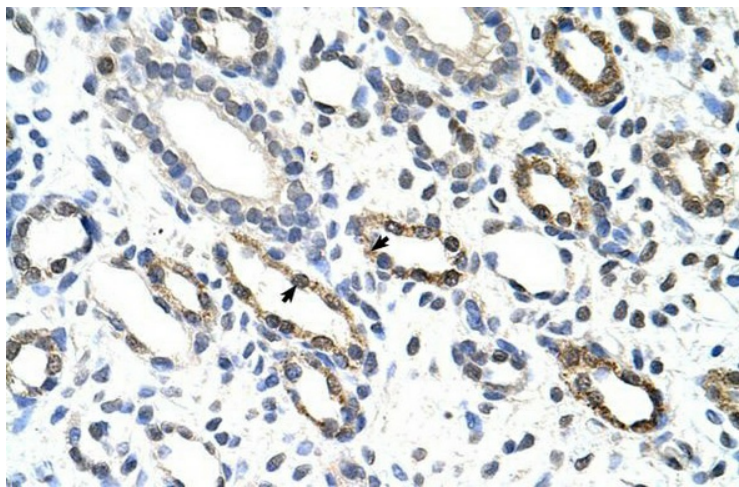
Etle; etoile; SALP; SLM-2; SLM2; T-STAR; TSTAR

Note:

Immunogen Sequence Homology: Pig: 100%; Rat: 100%; Horse: 100%; Human: 100%; Bovine: 100%; Rabbit: 100%; Guinea pig: 100%; Dog: 86%; Mouse: 86%

Product images:


WB Suggested Anti-KHDRBS3 Antibody Titration: 0.2-1 ug/ml; ELISA Titer: 1: 62500; Positive Control: Jurkat cell lysate



Rabbit Anti-KHDRBS3 Antibody; Paraffin Embedded Tissue: Human Kidney; Cellular Data: Epithelial cells of renal tubule; Antibody Concentration: 4.0-8.0 ug/ml; Magnification: 400X