

Product datasheet for **TA345973**

Igf2bp3 Rabbit Polyclonal Antibody

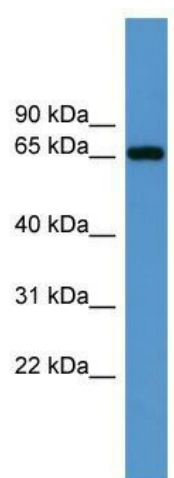
Product data:

Product Type:	Primary Antibodies
Applications:	WB
Recommended Dilution:	WB
Reactivity:	Mouse
Host:	Rabbit
Isotype:	IgG
Clonality:	Polyclonal
Immunogen:	The immunogen for anti-Igf2bp3 antibody: synthetic peptide corresponding to a region of Mouse. Synthetic peptide located within the following region: QQNPSPQLRGRGPGQRGSSRQASPGSVSKQKPCDLPLRLLVPTQFVGAI
Formulation:	Liquid. Purified antibody supplied in 1x PBS buffer with 0.09% (w/v) sodium azide and 2% sucrose. <i>Note that this product is shipped as lyophilized powder to China customers.</i>
Purification:	Affinity Purified
Conjugation:	Unconjugated
Storage:	Store at -20°C as received.
Stability:	Stable for 12 months from date of receipt.
Predicted Protein Size:	63 kDa
Gene Name:	insulin-like growth factor 2 mRNA binding protein 3
Database Link:	NP_076159 Entrez Gene 140488 Mouse Q9CPN8
Background:	Igf2bp3 is a RNA-binding protein that act as a regulator of mRNA translation and stability. Igf2bp3 binds to the 5'-UTR of the insulin-like growth factor 2 (IGF2) mRNAs. Igf2bp3 binds to sequences in the 3' UTR of CD44 mRNA.
Synonyms:	CT98; DKFZp686F1078; hKOC; IMP-3; IMP3; KOC1; VICKZ3
Note:	Immunogen Sequence Homology: Dog: 100%; Pig: 100%; Human: 100%; Bovine: 100%; Guinea pig: 100%; Rat: 93%; Horse: 93%; Mouse: 93%; Rabbit: 93%; Yeast: 85%



[View online »](#)

Product images:



WB Suggested Anti-Igf2bp3 Antibody Titration:
0.2-1 ug/ml; ELISA Titer: 1: 12500; Positive
Control: Mouse Kidney