

## Product datasheet for **TA345972**

### IGF2BP1 Rabbit Polyclonal Antibody

#### Product data:

Product Type:	Primary Antibodies
Applications:	IHC, WB
Recommended Dilution:	IHC, WB
Reactivity:	Human, Rat
Host:	Rabbit
Isotype:	IgG
Clonality:	Polyclonal
Immunogen:	The immunogen for anti-IGF2BP1 antibody: synthetic peptide directed towards the N terminal of human IGF2BP1. Synthetic peptide located within the following region: PDEQIAQGPENGRRGGFGSRGQPRQGSPVAAGAPAKQQVDIPLRLLVPT
Formulation:	Liquid. Purified antibody supplied in 1x PBS buffer with 0.09% (w/v) sodium azide and 2% sucrose. <i>Note that this product is shipped as lyophilized powder to China customers.</i>
Purification:	Affinity Purified
Conjugation:	Unconjugated
Storage:	Store at -20°C as received.
Stability:	Stable for 12 months from date of receipt.
Predicted Protein Size:	63 kDa
Gene Name:	insulin like growth factor 2 mRNA binding protein 1
Database Link:	<a href="#">NP_006537</a> <a href="#">Entrez Gene 303477 RatEntrez Gene 10642 Human Q9NZI8</a>



[View online »](#)

**Background:**

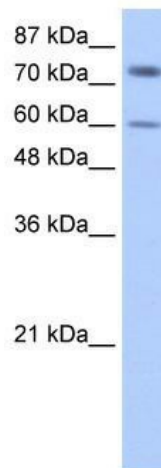
IGF2BP1 is a member of the IGF-II mRNA-binding protein (IMP) family. The protein contains four K homology domains and two RNA recognition motifs. It functions by binding to the 5' UTR of the insulin-like growth factor 2 (IGF2) mRNA and regulating IGF2 translation. This gene encodes a member of the IGF-II mRNA-binding protein (IMP) family. The protein encoded by this gene contains four K homology domains and two RNA recognition motifs. It functions by binding to the 5' UTR of the insulin-like growth factor 2 (IGF2) mRNA and regulating IGF2 translation. This gene encodes a member of the IGF-II mRNA-binding protein (IMP) family. The protein encoded by this gene contains four K homology domains and two RNA recognition motifs. It functions by binding to the 5' UTR of the insulin-like growth factor 2 (IGF2) mRNA and regulating IGF2 translation. Publication Note: This RefSeq record includes a subset of the publications that are available for this gene. Please see the Entrez Gene record to access additional publications.

**Synonyms:**

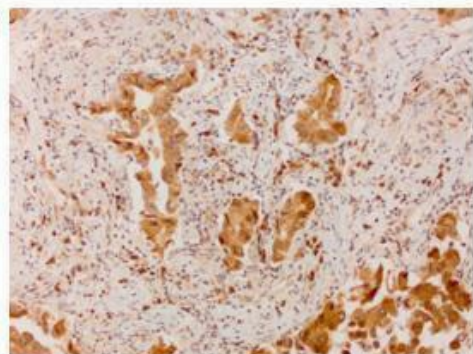
CRD-BP; CRDBP; IMP-1; IMP1; VICKZ1; ZBP1

**Note:**

Immunogen Sequence Homology: Dog: 100%; Pig: 100%; Rat: 100%; Human: 100%; Rabbit: 100%; Horse: 93%; Mouse: 93%; Sheep: 93%; Bovine: 93%; Guinea pig: 93%

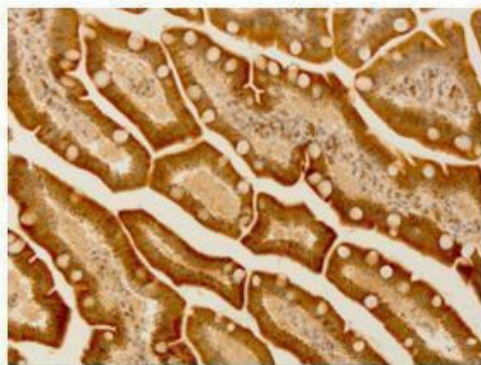
**Product images:**

WB Suggested Anti-IGF2BP1 Antibody Titration:  
0.2-1 ug/ml; ELISA Titer: 1: 12500; Positive  
Control: HepG2 cell lysate

**IGFBP1**


Brown: IGF2BP1 Blue: Nuclei

Sample Type: Human lung adenocarcinoma  
 Primary Antibody Dilution: 1: 300; Secondary Antibody: Anti-rabbit-linker, Fbex-HRP; Secondary Antibody dilution: NOT FOUND; Color/Signal Descriptions: Brown: IGF2BP1 Blue: Nuclei; Gene Name: IGF2BP1; Submitted by: Haodong Xu. Department of Pathology, University of Rochester medical Center

**IGFBP1**


Brown: IGF2BP1 Blue: Nuclei

Researcher: Haodong Xu. Department of Pathology, University of Rochester medical Center; Application: IHC; Species+tissue/cell type: Human lung adenocarcinoma; Primary antibody dilution: 1: 300; Secondary antibody: Anti-rabbit-linker, Fbex-HRP; Secondary antibody dilution: NOT FOUND