

## Product datasheet for **TA345971**

### SLBP Rabbit Polyclonal Antibody

#### Product data:

Product Type:	Primary Antibodies
Applications:	IHC, WB
Recommended Dilution:	WB
Reactivity:	Human
Host:	Rabbit
Isotype:	IgG
Clonality:	Polyclonal
Immunogen:	The immunogen for anti-SLBP antibody: synthetic peptide directed towards the middle region of human SLBP. Synthetic peptide located within the following region: INYGKNTIAYDRYIKEVPRHLRQPGIHPKTPNKFKKYSRRSWDQQIKLWK
Formulation:	Liquid. Purified antibody supplied in 1x PBS buffer with 0.09% (w/v) sodium azide and 2% sucrose. <i>Note that this product is shipped as lyophilized powder to China customers.</i>
Purification:	Affinity Purified
Conjugation:	Unconjugated
Storage:	Store at -20°C as received.
Stability:	Stable for 12 months from date of receipt.
Predicted Protein Size:	30 kDa
Gene Name:	stem-loop binding protein
Database Link:	<a href="#">NP_006518</a> <a href="#">Entrez Gene 7884 Human Q14493</a>



[View online »](#)

**Background:**

SLBP binds to the stem-loop structure in replication-dependent histone mRNAs. Histone mRNAs do not contain introns or polyadenylation signals, and are processed by endonucleolytic cleavage. The stem-loop structure is essential for efficient processing but this structure also controls the transport, translation and stability of histone mRNAs. Expression of the protein is regulated during the cell cycle, increasing more than 10-fold during the latter part of G1. This gene encodes a protein that binds to the stem-loop structure in replication-dependent histone mRNAs. Histone mRNAs do not contain introns or polyadenylation signals, and are processed by endonucleolytic cleavage. The stem-loop structure is essential for efficient processing but this structure also controls the transport, translation and stability of histone mRNAs. Expression of the protein is regulated during the cell cycle, increasing more than 10-fold during the latter part of G1.

**Synonyms:**

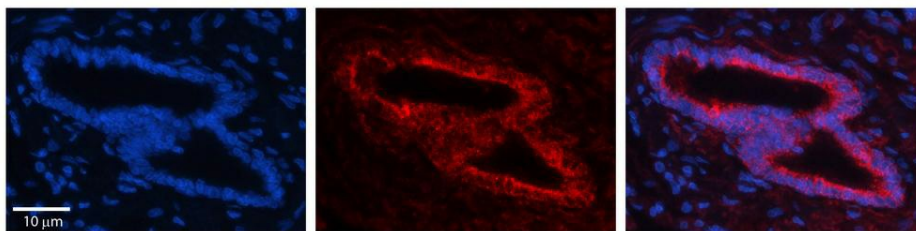
HBP

**Note:**

Immunogen Sequence Homology: Dog: 100%; Pig: 100%; Rat: 100%; Horse: 100%; Human: 100%; Bovine: 100%; Zebrafish: 100%; Guinea pig: 100%; Mouse: 93%

**Product images:**


WB Suggested Anti-SLBP Antibody Titration: 0.2-1 ug/ml; ELISA Titer: 1: 312500; Positive Control: HepG2 cell lysate; SLBP is supported by BioGPS gene expression data to be expressed in HepG2



Rabbit Anti-SLBP Antibody; Formalin Fixed Paraffin Embedded Tissue: Human Bronchial Epithelial Tissue; Observed Staining: Cytoplasmic; Primary Antibody Concentration: 1: 100; Secondary Antibody: Donkey anti-Rabbit-Cy3; Secondary Antibody Concentration: 1: 200; Magnification: 20X; Exposure Time: 0.5–2.0 sec;