

## Product datasheet for **TA345968**

### **RAD51AP1 Rabbit Polyclonal Antibody**

#### **Product data:**

<b>Product Type:</b>	Primary Antibodies
<b>Applications:</b>	WB
<b>Recommended Dilution:</b>	WB
<b>Reactivity:</b>	Human
<b>Host:</b>	Rabbit
<b>Isotype:</b>	IgG
<b>Clonality:</b>	Polyclonal
<b>Immunogen:</b>	The immunogen for anti-RAD51AP1 antibody: synthetic peptide directed towards the middle region of human RAD51AP1. Synthetic peptide located within the following region: EDDVGGVQGKRKAASKAAAQQRKILLEGSDGDSANDTEPDFAPGEDSEDD
<b>Formulation:</b>	Liquid. Purified antibody supplied in 1x PBS buffer with 0.09% (w/v) sodium azide and 2% sucrose. <i>Note that this product is shipped as lyophilized powder to China customers.</i>
<b>Purification:</b>	Affinity Purified
<b>Conjugation:</b>	Unconjugated
<b>Storage:</b>	Store at -20°C as received.
<b>Stability:</b>	Stable for 12 months from date of receipt.
<b>Predicted Protein Size:</b>	37 kDa
<b>Gene Name:</b>	RAD51 associated protein 1
<b>Database Link:</b>	<a href="#">NP_006470</a> <a href="#">Entrez Gene 10635 Human Q96B01</a>
<b>Background:</b>	RAD51AP1 may participate in a common DNA damage response pathway associated with the activation of homologous recombination and double-strand break repair. RAD51AP1 binds to single and double stranded DNA, and is capable of aggregating DNA. RAD51AP1 also binds RNA.
<b>Synonyms:</b>	PIR51

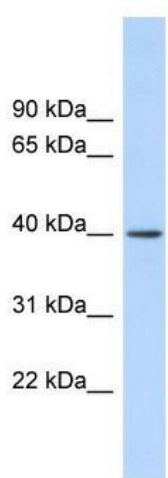


[View online »](#)

**Note:** Immunogen Sequence Homology: Human: 100%; Dog: 93%; Rat: 92%; Horse: 86%; Rabbit: 79%

**Protein Families:** Druggable Genome

**Product images:**



WB Suggested Anti-RAD51AP1 Antibody Titration:  
0.2-1 ug/ml; Positive Control: Human Muscle